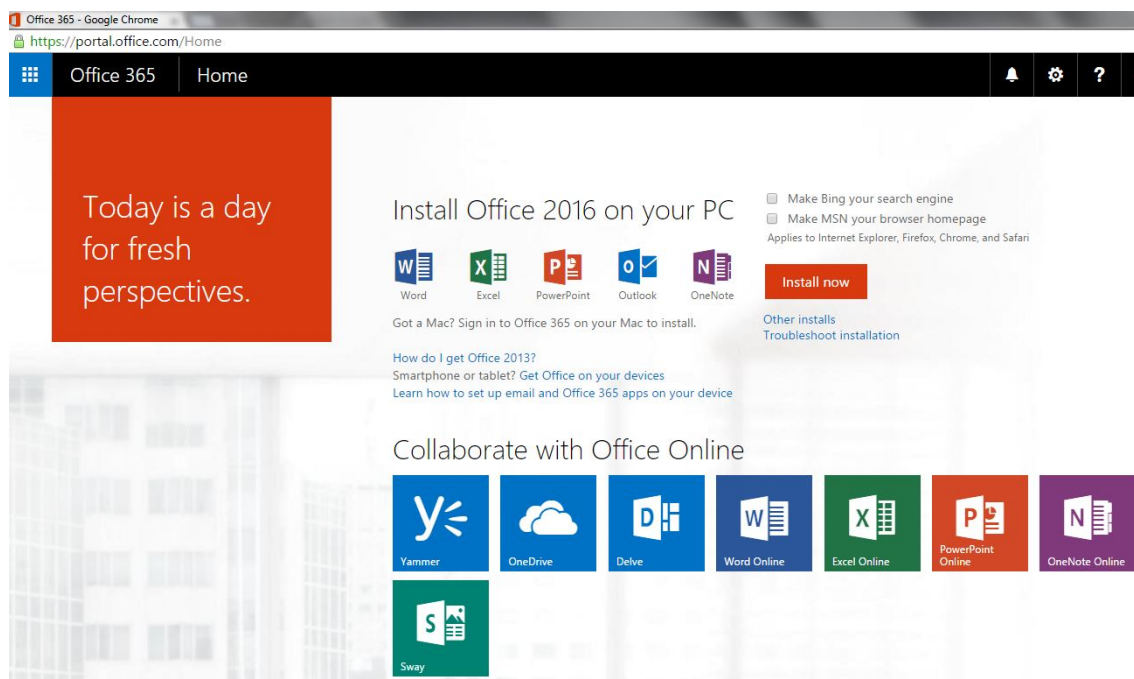


Installing Office at Home for Students (Windows/Mac)

1. Logon to the student portal: <http://student.det.nsw.edu.au>
2. Scroll down to “Learning” and click on “Microsoft Office 365”.

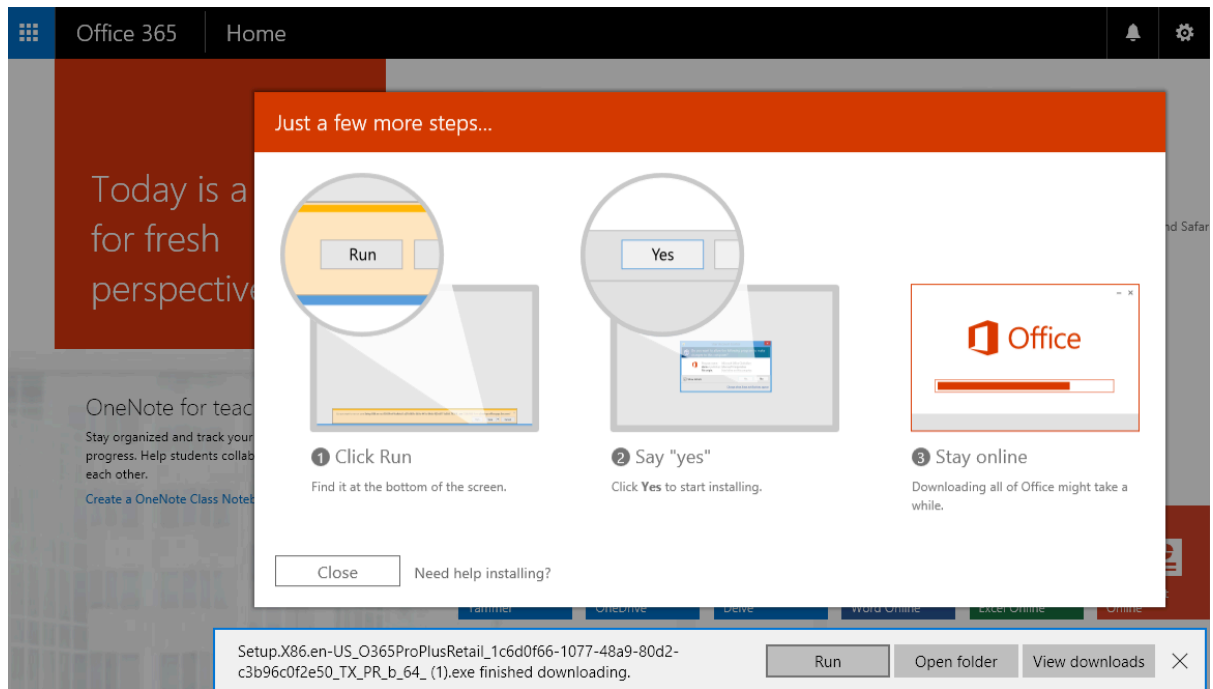


3. Click on “Install now”



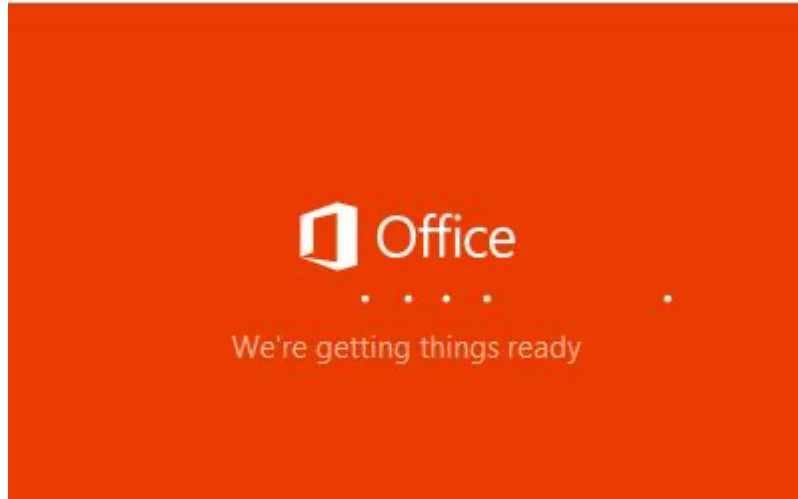
4. “Run” the installer program. Click on “yes” if you are then asked whether you want to install the program.

Note: Mac users – clicking install now will download a single file to install Office, just and run/install and wait for it to complete.



5. Continue through the installation process.

Note: The installation process may take a while depending on your internet connection – please be patient



6. Once the software is installed it will be validated using your DoE account (i.e. firstname.lastname1@education.nsw.gov.au).
7. Make sure you check the location/folder your documents are saved to, as this maybe the cloud. To save to the computer click "On My Mac/PC when saving).