
CURRICULUM STAGE 6



PRELIMINARY COURSE – 2017

HSC COURSE – 2018

Course Information Book

GENERAL INFORMATION

PRELIMINARY & HSC COURSES

Your studies are divided into 2 parts: **The Preliminary Course** and **The HSC Course**.

Most Preliminary courses finish with a Yearly examination at the end of Term 3 and students commence their HSC COURSES AT THE BEGINNING OF Term 4, provided they have satisfactorily completed the Preliminary Course.

UNITS

All courses offered for the Higher School Certificate have a unit value. Courses may have a value of 1 unit or 2 units. Most courses are 2 units.

A unit of study comprises 60 hours indicative time (time expected for a student to achieve the objectives and outcomes of course).

In the HSC each unit has a value of 50 marks. Hence a 2 unit course has value of 100 marks.

SATISFACTORY COMPLETION OF A COURSE

Teaching and Learning is the core of our business and students are required to make a serious attempt at all courses and participate in the course. Students who fail to demonstrate satisfactory participation in learning, e.g. a documented pattern of non satisfactory participation, non serious attempts to meet course outcomes and non compliance with Board of Studies requirements can be expelled from the school. Students can also be given "N" awards for subjects in the Preliminary year and therefore be ineligible to complete the HSC in that subject.

SCHOOL TIMETABLE

All courses offered are organized into a TIMETABLE that is made up of 6 lines. The school operates on a 2 week cyclical timetable – Week A and Week B.

We do our best to provide students with all of the courses they want but it is not possible to include ALL courses named in the course selection form, and a number of students may have to change some of their choices.

Students wishing to study a course that cannot be offered on our timetable may consider the following options:

- Enroll in Distance Education and study in the library and have contact with the teacher through the mail; or
- Study this course at another school or at a TAFE.

CAREERS ADVISER

- It is crucial to consult with your Careers Adviser. Many tertiary institutions require minimum standards in specified courses and this may be assumed knowledge or compulsory prerequisites.

COURSE SELECTION SHEET

Please ensure you complete the following tasks:

- Consult with your parents, teachers and careers adviser: and
- Follow the steps in the Course Selection Sheet

FEES

Costs associated with each subject are printed on the subject information page.

A \$50.00 Text Book Bond is charged for the use of all text books and will be refunded when the student leaves school and has returned all text books.

Place Course Selection Sheets in the box in the Deputy Principal's office.

HIGHER SCHOOL CERTIFICATE (HSC)

Candidates for the Higher School Certificate must undertake a program of study comprising at least:

- 12 units of Preliminary courses; and
 - 10 units of Higher School Certificate courses.
- In Year 12 the majority of students choose to study only 10 units.

Both the Preliminary course pattern and the HSC course pattern must include:

- at least six units of Board Developed Courses;
- at least two units of a Board Developed Course in English;
- at least three courses of two units value (or greater); and
- at least four subjects.
- The Board of Studies has agreed to recognise satisfactory completion of English Studies as fulfillment of English requirements for the HSC.

Note: No more than six units of courses in Science can contribute to Higher School Certificate eligibility.

COURSES

There are different types of courses that you select in Years 11 and 12.

BOARD DEVELOPED COURSES

These courses are developed by the Board of Studies. There is a syllabus for each course which contains:

- the course objectives, structure, content and outcomes;
- specific course requirements;
- assessment requirements;
- sample examination papers and marking guidelines;
- the performance scale (except for Vocational Educational Education and Training Courses).

These courses are examined externally at the end of the HSC course and can count towards the calculation of the Australian Tertiary Academic Ranking (**ATAR**). If you plan any further studies at a tertiary institution after you leave school, you should make sure you study at least 10 units of these subjects.

Australian Tertiary Academic Ranking (ATAR)

To be eligible for an ATAR a student must complete at least ten units of Board Developed Courses including at least two units of English. The Board Developed Courses must include at least three courses of two units or greater, and at the least four subjects. **This does NOT include English Studies. A student who completes the English Studies course will not be eligible for the ATAR.**

If you are a reasonably capable student you need to keep all your options open. Although you may not be considering a university course now, by the end of Year 12 this may be your preferred option. **It is important that you meet the requirements of the ATAR. This is one decision that cannot be reversed, however entry to university can be achieved in other ways after Year 12.** For example the University of Newcastle runs the Newstep program, as well as mature age entry.

The ATAR will be based on an aggregate of scaled marks in ten units of Board Developed Courses comprising:

- the best two units of English; and
- the best eight units from the remaining units, subject to the provision that no more than two units of Category B courses be included.

The **Category A subjects** offered as HSHS are:

English, Mathematics, Biology, Chemistry, Physics, Senior Science, Ancient History, Business Studies, Economics, Geography, Legal Studies, Modern History, Society & Culture, Design & Technology, Community & Family Studies, Food Technology, Information Processing & Technology, PDHPE, French, Music, Visual Art, Aboriginal Studies.

The **Category B (ICF Framework) subjects** offered at HSHS are:

- Business Services – Office Administration (240 hours) *
- Construction (240 hours)*
- Hospitality Operations (240 hours)*
- Retail Operations (240 hours) *
- Information Technology(240 hours) *

Subjects marked with an * have an optional examination for the HSC. This must be undertaken if you wish this subject to contribute to the ATAR.

BOARD ENDORSED COURSES (BEC)

There are two main types of Board Endorsed Courses: - Content Endorsed Courses and School Designed Courses.

Content Endorsed Courses (CEC)

These have syllabuses endorsed by the Board of Studies to cater for areas of Special interest not covered in the board Developed Courses.

Most HSC VET (Vocational Education and Training) courses delivered by TAFE are content Endorsed Course.

The English Studies Course is a Content Endorsed Course. Students undertaking this course require the permission of their parent(s)/caregiver(s).

School Designed Courses

Schools may also design special courses to meet student needs. The Board of Studies must approve these courses. Once approval is granted, schools offer selected courses to senior students as part of the HSC.

There is no external examination for any Content Endorsed Course or School Designed Course, but all board Endorsed Courses count towards the Higher School Certificate and appear on your record of Achievement.

Board Endorsed Courses do not count in the calculation of the ATAR.

EXTENSION COURSES

Extension courses are available in English Mathematics, History and some VET courses. To be accepted into an extension course students must have demonstrated above average ability in prior work and gained approval from the Head Teacher.

VET and HSC

VOCATIONAL EDUCATION and TRAINING (VET) COURSES

(refer to *VET booklet*)

Either Board Developed or Board Endorsed

- VET courses are offered as part of the Higher School Certificate. They enable students to study courses which are relevant to industry needs and have clear links to post – school destinations;
- These courses allow students to gain both Higher School Certificate qualifications and accreditation with industry and the workplace as part of the Australian Qualifications Framework (AQF). The National Framework is recognized across Australia and helps students to move easily between the various education and training sectors and employment;
- Each course has a specific workplace component and a minimum number of hours students spent in the workplace or a simulated workplace at a school. Students receive special documentation showing the competencies gained. Schools will deliver some of these courses, while TAFE or other providers will deliver others.

Industry Curriculum Framework (ICF)

The Board has developed curriculum frameworks for seven industries. Within each framework there are a number of courses. At least one designated 240 hour course in each framework contributes towards an ATAR. You must undertake a work placement to complete these courses successfully.

Accredited teachers at the school deliver six of the Frameworks:-

- Business Services
- Construction
- Hospitality Operations
- Retail Operations
- Information Technology

PATTERN OF STUDY

FULL-TIME

A full-time student is required to study a minimum of 12 units in Year 11. In Year 12 students must study a minimum of 10 units in total.

PART-TIME

Most students complete their HSC studies over two years, however you may take up to five years to complete your HSC course. This Pathways option appeals to students with commitments outside school such as sporting representation or part time employment. Students can opt to move to Pathways option at any stage during Stage 6. If you are considering pathways, you need to consult with the Careers Adviser and the Deputy Principal Curriculum.

HSC REPORT

On satisfactory completion of your HSC you will receive a portfolio containing:

The HSC Testamur (the official certificate confirming your achievement of all requirements for the award).

The Record of Achievement (this document lists the courses you have studied and reports the marks and bands you have achieved).

Course Reports (for every HSC board Developed Course you will receive a Course Report showing your marks, the Performance Scale and the band descriptions for that course. A graph showing the statewide distribution of marks in the course is also shown).

You will also receive four school reports during the Preliminary and HSC courses. Employers often request to see all four reports.

WILL I MEET THE REQUIREMENTS FOR A HSC / ATAR ?

Am I satisfactorily completing my Preliminary Course?

Taking into account any Preliminary courses that I may have previously completed, along with any Preliminary Courses that I am now currently studying, do I:

	Tick the Appropriate Box	
→have at least 12 units of Preliminary courses ?	<input type="checkbox"/>	<input type="checkbox"/>
	Yes	No
→have at least 2 units of BDC English	<input type="checkbox"/>	<input type="checkbox"/>
	Yes	No
→have at least 4 Subjects ?	<input type="checkbox"/>	<input type="checkbox"/>
	Yes	No
→have at least 6 units of BDC	<input type="checkbox"/>	<input type="checkbox"/>
	Yes	No
→have at least 3 courses of 2 unit value or greater ?	<input type="checkbox"/>	<input type="checkbox"/>
	Yes	No

If you intend qualifying for the Award of a HSC, you will need to have answered **Yes** to all of the above questions!

Remember: The English Studies CEC course does count towards a HSC but not an ATAR

If you have any queries, see the Deputy Principal.

Will I meet the requirements for an ATAR?

Taking into account any Preliminary Courses that I may have previously completed, along with any Preliminary Courses that I am now currently studying, do I:

	Tick the Appropriate Box	
→have at least 2 units of BDC English ?	<input type="checkbox"/>	<input type="checkbox"/>
	Yes	No
→have at least 4 BDC Subjects	<input type="checkbox"/>	<input type="checkbox"/>
	Yes	No
→have at least 10 units of BDC's	<input type="checkbox"/>	<input type="checkbox"/>
	Yes	No
→have at least 3 BDC courses of 2 unit or greater?	<input type="checkbox"/>	<input type="checkbox"/>
	Yes	No

If you intend qualifying for an **ATAR**, you will need to have answered **Yes to all of the above questions!**

Remember, if you have studied the English Studies CEC course you DO NOT meet the requirements for an ATAR.

If you have any queries, see the Deputy Principal

Preliminary Course Selection – School Delivered Courses

English Faculty	Cat	TAS Faculty	Cat
English Advanced	A	Food Technology	A
English Standard	A	Industrial Technology-Timber &	B
English Extension 1	A		
English Fundamentals Course	BDC		
English Content Endorsed English	CEC		
Mathematics Faculty	Cat	PD Health PD Faculty	Cat
Mathematics	A	PD/H/PE	A
Mathematics General	A	Sport Lifestyle & Recreation	BEC
Mathematics Extension 1	A	Community & Family Studies	A
Science Faculty	Cat	CAPAL Faculty	Cat
Biology	A	Japanese Beginners Course	A
Chemistry	A	Music	A
Earth and Environmental Science	A	Visual Arts	A
Physics	A		
Senior Science	A		
HSIE Faculty	Cat	VET Courses	Cat
Ancient History	A	VET Construction	B
Business Studies	A	VET Hospitality	B
Geography	A	VET Metal & Engineering	B
Legal Studies	A		
Modern History	A	VET Skills for Work and Vocational Pathways	BEC
Society & Culture	A		
Studies in Religion	A	VET Sport (Coaching)	BEC
Work Studies	A	VET Retail	B
		TAFE Courses	
		Choose from TVET Courses	

Checklist for Higher School Certificate

At least 12 Preliminary and 10 HSC units of study

At least 2 units of a Board Developed Course in English

At least 4 subjects

At least 6 units of Board Developed Courses

At least 3 courses of 2 unit value or greater Board Developed and/or Board Endorsed Courses

A maximum of 6 Preliminary units and 6 HSC units from courses in science

In the Preliminary study pattern, Senior Science **cannot** be studied with Biology, Chemistry or Physics

Checklist for ATAR

At least 10 units of Board Developed Courses including 2 units of English

At least 8 units of Category A Courses

At least 3 Board Developed Courses of 2 units or greater and at least 4 subjects.

Note: Board Endorsed and Content Endorsed Courses do not satisfy requirements for a ATAR – BEC

ENGLISH ADVANCED COURSE

2 UNITS

INTRODUCTION - PRELIMINARY COURSE

Students explore the ways events, experiences, ideas, values and processes are represented and analyse the ways texts reflect different attitudes and values. Texts may include multimedia, film as well as literary texts. Students are expected to both compose and respond to texts. This course focuses on valuing and evaluating texts.

STUDENTS WHO WOULD BENEFIT FROM DOING THIS COURSE?

The Preliminary and HSC English (Advanced) Courses are designed for students who wish to become critical and sophisticated users of English and who wish to apply critical and creative skills to their response to texts.

PRE-REQUISITES

Stage 5 English and Faculty recommendation.

CONTENT

Preliminary Course: Has two sections:

Area of Study common to the Standard and Advanced. Students explore and experiment with meanings and interpretation and draw comparisons and connections among a wide range of texts. Forty percent (40%) of the course marks are from this component.

Elective Modules where students are able to examine texts and the interaction of ideas and language and their application to specific social contexts.

ASSESSMENT

Preliminary Course: Students will complete formal assessment tasks in the Area of Study and the Elective Modules. Students will also complete Half Yearly and Yearly examinations.

INTRODUCTION - HSC

Students analyse and evaluate texts, and the ways they are valued in their context. The HSC Course has two sections.

The common content for the HSC Advanced and Standard Courses is Area of Study. Students study prescribed texts and explore and analyse the meanings conveyed, shaped and interpreted through texts. This section of the course contributes forty percent (40%) of the marks.

Three Elective Modules emphasise aspects of shaping meaning and discussion of the effectiveness of different texts for different audiences and situations. The modules have prescribed texts.

The study of Shakespeare is compulsory. Students who wish to study English Extension in the Preliminary Course or Extension 1 or 2 in the HSC Course must study Advanced English.

EXCLUSIONS

Standard English, Fundamentals of English, English Studies.

ASSESSMENT

HSC Course: Students are formally assessed on each of the Modules and the Area of Study. Students will also be assessed by completing a Half Yearly Examination and a Trial HSC.

The HSC examination is a written examination consisting of:

Paper 1: A two hour examination of Area of Study (Common Course Content) Weighting 40%

Paper 2: A two hour examination of the three Elective Modules Weighting 60%

CONTACT PERSON

Ms K Lindstrom - Head Teacher English

ENGLISH STANDARD COURSE

2 UNITS

INTRODUCTION - PRELIMINARY COURSE

Preliminary Course: Students explore the ways meanings are conveyed and interpreted through texts, and connections among texts. Texts may include multi media, film, as well a literary texts. Students are expected to compose and respond to texts. This course focuses on valuing and evaluating texts.

STUDENTS WHO WOULD BENEFIT FROM DOING THIS COURSE?

This course is for students who wish to use English to enhance their personal, social and vocational lives. Students who enjoy reading and engaging with a broad range of texts. This is an ATAR course and will suit students who are considering enrolling into a university course.

PRE-REQUISITES

Stage 5 English and Faculty recommendations.

CONTENT

Preliminary Course: Has two sections:

Area of Study common to the Standard and Advanced. Students explore and experiment with meanings, interpretation and draw comparisons and connections among a wide range of texts. Forty per cent of the course mark is from this component.

Elective Modules where students are able to examine texts, the interaction of ideas and language, and application to specific social contexts.

ASSESSMENT

Preliminary Course: Students will complete formal assessment tasks in the Area of Study and the Elective Modules. Students will also complete Half Yearly and Yearly examinations.

INTRODUCTION – HSC

HSC Course: Students explore the ways events, experiences and ideas are represented in texts and analyse the way they reflect different attitudes and values. Students reflect on purpose and content.

CONTENT

HSC Course: Has two sections:

The common content for the HSC Advanced and Standard Courses is **Area of Study**. Students study prescribed texts and explore and analyse the meanings conveyed, shaped and interpreted through texts. This section of the course contributes forty per cent (40%) of the marks.

Three **Elective Modules** emphasise aspects of shaping meaning and discussion of the effectiveness of different texts to different audiences and situations. The modules have prescribed texts.

EXCLUSIONS

Advanced English

ASSESSMENT

HSC Course: Students are formally assessed on each of the Modules and the Area of Study. Students will also be assessed by completing a Half Yearly Examination and a Trial HSC.

The HSC examination is a written examination consisting of:

Paper 1: A two hour examination of Area of Study (Common Course Content) Weighting 40%

Paper 2: A two hour examination of the three Elective Modules Weighting 60%

CONTACT PERSON

Ms K Lindstrom - Head Teacher English

ENGLISH EXTENSION COURSE

1 UNIT

INTRODUCTION – PRELIMINARY COURSE

Students explore how and why texts are valued in and appropriated into a range of contexts. They consider why some texts may be perceived as culturally significant.

STUDENTS WHO WOULD BENEFIT FROM DOING THIS COURSE?

The Preliminary and HSC English (Extension) Courses are designed for students who wish to become critical and sophisticated users of English and who wish to apply critical and creative skills.

PRE-REQUISITES

Stage 5 English, Year 11 Advanced English and Faculty recommendations.

CONTENT

Preliminary Course: Students undertaking the Preliminary English (Extension) course must complete Modules: Texts, Culture and Value.

ASSESSMENT

Preliminary Course: Students will complete formal assessment tasks in the Area of Study and the Elective Modules. Students will also complete Half Yearly and Yearly examinations.

Component	Weighting
Knowledge and understanding of complex texts and of how and why they are valued	25
Skills in: Complex analysis Sustained composition Independent investigation	25
	50

INTRODUCTION – HSC

Students explore ideas of value and consider how cultural values and systems of valuation arise.

HSC

Students undertaking HSC English Extension Course 1 must complete ONE Elective chosen from ONE of the HSC Modules A, B or C.

Module A: Genre

Module B: Texts & Ways of Thinking

Module C: Language and Values

EXCLUSIONS

Standard English, Fundamentals of English, English Studies.

ASSESSMENT

HSC Course: Students are formally assessed on each of the Modules and the Area of Study. Students will also be assessed by completing a Half Yearly Examination and a Trial HSC.

The HSC examination is a written examination consisting of:

Paper 1: A two hour examination of Area of Study (Common Course Content) Weighting 40%

Paper 2: A two hour examination of the three Elective Modules Weighting 60%

Summary of external and internal HSC assessment

External Examination	Mark	Internal assessment	Weighting
Candidates answer two sustained response questions on their chosen elective	25	Knowledge and understanding of complex texts and of how and why they are valued	25
	25	Skills in: <ul style="list-style-type: none">▪ Complex analysis▪ Sustained composition▪ Independent investigation	25
	50		50

CONTACT PERSON

Ms K Lindstrom - Head Teacher English

ENGLISH CONTENT ENDORSED COURSE ENGLISH STUDIES

INTRODUCTION

The *English Studies* course is a Content Endorsed Stage 6 HSC course offering a comprehensive and relevant language experience and an experience of literature. It aims to increase the opportunities available to students in their personal, social and vocational lives.

How does English Studies compare to other Stage 6 English Courses?

Similarities	Differences
<ul style="list-style-type: none">A 2 unit course requiring 240hrs of study, including a 120hr Preliminary course and a 120hr HSC course	<ul style="list-style-type: none">Non ATAR: students cannot use this course to gain entry to university directly from school
	<ul style="list-style-type: none">Content-endorsed course: no HSC examination
<ul style="list-style-type: none">Contributes towards requirements for award of HSC	<ul style="list-style-type: none">More flexible structure, allowing the course to be tailored for students

STUDENTS WHO WOULD BENEFIT FROM DOING THIS COURSE?

Profile of the English Studies student:

- Wants or needs to gain a HSC
- Does not intend to seek entry to university at end of schooling**, but rather looking to gain entry to workforce or to TAFE (or similar education institution)
- Recent performance indicates difficulty coping with the demands of the Standard course, not necessarily because of low ability

CONTENT – PRELIMINARY AND HSC COURSE

Flexibility of course allows teachers to tailor it to suit student's needs, interests and abilities:

- Choice of modules, except for one mandatory module in each of Preliminary Course and HSC Course
- Option for teachers to design a school-based module for the Preliminary Course.
- Choice of duration, and therefore number, of modules: 20 to 40hrs (or approximately a half term to full term)
- Choice of activities and texts within all modules
- Assessment must conform to particular requirements, including the number of tasks (3 to 5 for each of Preliminary Course and HSC Course) and specific weightings for components, but the fact that students are not being prepared for a public examination frees up assessment.

Notice the focus of the four objectives:

- Objective 1: literature
- Objective 2: literacy
- Objective 3: language
- Objective 4: ways of working and learning

COSTS

Excursion requirements if applicable

CONTACT PERSON

Ms K Lindstrom - Head Teacher English

ENGLISH COURSE

FUNDAMENTALS OF ENGLISH

1 OR 2 UNITS

INTRODUCTION

The Fundamentals of English course addresses the literacy needs of students undertaking the course and assists students to use the English language effectively in their study and for vocational and other purposes.

The course enables students to spend more time on, and receive more intensive tuition in, English. It integrates the modes of language to improve students' understanding of the forms, features, structures and functions of language. Students will enhance their skills in responding to and composing a range of texts characteristic of those they will encounter in their English and other courses. The course will assist them in the development and understanding of various strategies and styles of learning.

The Fundamentals of English course consists of 120 indicative hours of study. It may be delivered flexibly across the Preliminary and HSC years.

STUDENTS WHO WOULD BENEFIT FROM DOING THIS COURSE?

The course is designed for students who need additional time and assistance to meet the outcomes of English in Stage 6. In particular, the course aims to assist those students who are unlikely to achieve the outcomes of Stage 6 without additional intensive assistance. It will support those students who need to develop knowledge, skills and understanding to assist them in the study and use of English in the English (Standard) course or the English (ESL) course. It will also equip them to participate in more satisfying learning and to achieve English language outcomes to support their study of other subjects at Stage 6.

STRUCTURE

Completion of 60 hours of the Fundamentals of English course will be credentialled by the Board of Studies provided that students have:

- Completed 24 hours of study in Module A
- Completed at least 18 hours of study in each of two other course modules, and achieved some or all of the course outcomes as required by the Principal.

CO-REQUISITES

Standard English

PRE-REQUISITES

Stage 5 English and Faculty recommendations.

CONTENT

Module	Description	Requirement
Module A	Approaches to Areas of Study in English	Compulsory
Module B	Oral Communication Skills	Optional
Module C	Writing for Study	Optional
Module D	Investigative Skills	Optional
Module E	Workplace Communication	Optional

The course is non-examinable for the HSC. Students will undertake a minimum of three and a maximum of five modules. A minimum of 24 indicative hours may be spent on any one module. **Module A is compulsory.**

ASSESSMENT

Students will complete formal assessment tasks for the modules studied.

CONTACT PERSON

Ms K Lindstrom - Head Teacher English

MATHEMATICS

2 UNITS

INTRODUCTION

This is a calculus based course and is intended to give students an understanding of, and competence in aspects of Mathematics, which are applicable to the real world. It has general educational merit and is useful for concurrent studies in Science, Commerce and Technology & Engineering

STUDENTS WHO WOULD BENEFIT FROM THIS COURSE?

The course is a sufficient basis for further studies in Mathematics as a minor discipline at tertiary level in support of courses such as Science, Commerce and Technology & Engineering.

PRE-REQUISITES

The course is intended for students who have demonstrated competence in the skills in the Stage 5.3 Course.

CONTENTS

Preliminary Course	HSC Course
<ul style="list-style-type: none">• Basic Arithmetic• Real Functions• Trigonometric Ratios• Linear Functions• Quadratic Polynomial & the Parabola• Plane Geometry• Tangent & the Derivative	<ul style="list-style-type: none">• Series and Applications• Co-ordinate Methods in Geometry• Applications of Geometrical Properties• Geometrical Applications of Differentiation• Integration• Trigonometric Functions• Logarithmic & Exponential Functions• Applications of calculus to the physical world• Probability

ASSESSMENT – Internal

Assessment Components
<ul style="list-style-type: none">• Component A {knowledge, understanding and skills}• Component B {reasoning, interpretative, explanatory and communicative abilities}
Tasks: A number of tasks will be used to determine the school-based assessments and any one task may contribute to measuring attainments in both components.

For the HSC Course up to 30% of the Internal assessment in Mathematics Stage 6 may be based on the Preliminary Course.

ASSESSMENT – External (HSC Exam)

Students will sit for one 3 hour examination.

COSTS

Calculator requirements.

CONTACT PERSON

Mrs W Beckett - Head Teacher Mathematics

MATHEMATICS GENERAL 1

2 UNITS – YEAR 12

This course can only be selected in year 12.

Students must complete the Year 11 General Mathematics Course to qualify.

INTRODUCTION

This is a non –Calculus based course which provides the Mathematical background for students who do not wish to continue the formal study of Mathematics or Mathematics – based courses beyond Year 12. The course focuses on Mathematical skills, use of technology (computers and calculators) and techniques which have direct application to everyday activities.

STUDENTS WHO WOULD BENEFIT FROM THIS COURSE?

This course provides a strong foundation for vocational pathways, either in the workforce or in further vocational studies, and for university study in the areas of business, humanities, nursing and paramedical studies.

PRE-REQUISITES

This course is constructed on the assumption that students have achieved the outcomes of either the Stage 5.3, Stage 5.2 or Stage 5.1 Courses in Mathematics for the School Certificate.

EXCLUSIONS

Students may NOT study any other Stage 6 mathematics course in conjunction with General Mathematics.

CONTENT

Preliminary Course	HSC Course
<ul style="list-style-type: none">Financial Mathematics	<ul style="list-style-type: none">Financial mathematics
<ul style="list-style-type: none">Data & statistics	<ul style="list-style-type: none">Data & statistics
<ul style="list-style-type: none">Measurement	<ul style="list-style-type: none">Measurement
<ul style="list-style-type: none">Probability	<ul style="list-style-type: none">Probability
<ul style="list-style-type: none">Algebraic and Modelling	<ul style="list-style-type: none">Algebraic and Modelling
Preliminary Focus Studies	HSC Focus Studies
<ul style="list-style-type: none">Mathematics and Communication	<ul style="list-style-type: none">Mathematics and Design
<ul style="list-style-type: none">Mathematics and Driving	<ul style="list-style-type: none">Mathematics and the Human Body
	<ul style="list-style-type: none">Mathematics and Household Finance
	<ul style="list-style-type: none">Mathematics and Personal Resource Usage

ASSESSMENT – Internal

Assessment Components
<ul style="list-style-type: none">Knowledge and Skills
<ul style="list-style-type: none">Applications
Tasks may include: Examination – style questions, assignments, oral or written reports, samples of students work, practical investigations or projects, students written explanation of problem solutions, practical tasks.

For the HSC course up to 30% of the internal assessment in General Mathematics Stage 6 may be based on the Preliminary course.

This course does not count to an ATAR and students do not sit an external exam.

COSTS

Calculator requirements.

CONTACT PERSON

Mrs W Beckett - Head Teacher Mathematics

MATHEMATICS GENERAL 2

2 UNITS – YEAR 12

This course can only be selected in year 12.

Students must complete the Year 11 General Mathematics Course to qualify.

INTRODUCTION

This is a non –Calculus based course which provides the Mathematical background for students who do not wish to continue the formal study of Mathematics or Mathematics – based courses beyond Year 12. The course focuses on Mathematical skills, use of technology (computers and calculators) and techniques which have direct application to everyday activities.

STUDENTS WHO WOULD BENEFIT FROM THIS COURSE?

This course provides a strong foundation for vocational pathways, either in the workforce or in further vocational studies, and for university study in the areas of business, humanities, nursing and paramedical studies.

PRE-REQUISITES

This course is constructed on the assumption that students have achieved the outcomes of either the Stage 5.3, Stage 5.2 or Stage 5.1 Courses in Mathematics for the School Certificate.

EXCLUSIONS

Students may NOT study any other Stage 6 mathematics course in conjunction with General Mathematics.

CONTENT

Preliminary Course	HSC Course
<ul style="list-style-type: none">Financial Mathematics	<ul style="list-style-type: none">Financial mathematics
<ul style="list-style-type: none">Data & statistics	<ul style="list-style-type: none">Data & Statistics
<ul style="list-style-type: none">Measurement	<ul style="list-style-type: none">Measurement
<ul style="list-style-type: none">Probability	<ul style="list-style-type: none">Probability
<ul style="list-style-type: none">Algebra and Modelling	<ul style="list-style-type: none">Algebra and Modelling
Focus Studies	Focus Studies
<ul style="list-style-type: none">Mathematics and Communication	<ul style="list-style-type: none">Mathematics and Health
<ul style="list-style-type: none">Mathematics and Driving	<ul style="list-style-type: none">Mathematics and Resources

ASSESSMENT – Internal

Assessment Components
<ul style="list-style-type: none">Knowledge and SkillsApplications
Tasks may include: Examination – style questions, assignments, oral or written reports, samples of students work, practical investigations or projects, students written explanation of problem solutions, practical tasks.

For the HSC course up to 30% of the internal assessment in General Mathematics Stage 6 may be based on the Preliminary course.

This course does count to an ATAR.

COSTS

Calculator requirements.

CONTACT PERSON

Mrs W Beckett - Head Teacher Mathematics

MATHEMATICS EXTENSION 1

1 UNIT

INTRODUCTION

This course is intended to give students a thorough understanding of, and competence in, further aspects of Mathematics including many which are applicable to the real world. It is studied in addition to the Mathematics Course and is useful for concurrent studies in Science, Industrial Arts and Commerce.

STUDENTS WHO WOULD BENEFIT FROM THIS COURSE?

The course is a basis for further studies on Mathematics as a major discipline at tertiary level and for the study of Mathematics in support of the physical and engineering sciences.

PRE—REQUISITES

The course is intended for students who have demonstrated competence in the skills in the Stage 5.3 Mathematics course. To be eligible to undertake this course students need to achieve well in the Stage 5.3 course.

CONTENT

Preliminary Course	HSC Course
<ul style="list-style-type: none"> • Other Inequalities • Circle Geometry • Further Trigonometry • Angles between two lines • Internal and external division of lines • Parametric representation • Permutation & Combinations • Polynomials • Harder Applications of 2 Unit Preliminary Course 	<ul style="list-style-type: none"> • Methods of Integration • Primitives of $\sin^2 x$, $\cos^2 x$ • Velocity & acceleration as a function of displacement • Projectile Motion • Simple Harmonic Motion • Inverse functions and inverse trigonometric functions • Induction • Binomial Theorem • Further Probability • Iterative Methods for numerical estimation of the roots of a polynomial • Harder applications of 2 unit HSC course

ASSESSMENT – Internal

Assessment Components
<ul style="list-style-type: none"> • Component A {knowledge, understanding and skills} • Component B {reasoning, interpretative, explanatory and communicative abilities}
<p>Tasks: A number of tasks will be used to determine the school-based assessments and any one task may contribute to measuring attainments in both components.</p>

For the HSC Course up to 30% of the internal assessment in Mathematics Stage 6 may be based on the Preliminary Course.

ASSESSMENT – External

Students will sit for one 2 hour examination.

COSTS

Calculator requirements.

CONTACT PERSON

Mrs W Beckett - Head Teacher Mathematics

BIOLOGY

2 UNITS

INTRODUCTION

The Biology Course in Stage 6 Science provides students with a contemporary and coherent understanding of the concepts explaining the functioning, origins and evolution of life, and explores the levels of organization of life, from molecular to cellular and higher levels of organization, structure and function.

Please note: With Biology, students can take up a further 4 units of Science from Chemistry, Physics and Earth & Environmental Science.



CAREERS IN BIOLOGY

- Nursing
- Medical Science
- Microbiologist
- Dental Hygienist
- Nutritionist/Dietician
- Psychologist
- Teacher – Science
- Pathology
- Chiropractor
- Physiotherapy
- Marine Scientist
- Occupational Therapy
- Speech Therapist
- Teacher PD/Health/PE

PRE-REQUISITES

Satisfactory completion of Year 10 Science, with a band 3 or better.

CONTENT

Preliminary Course	HSC Course
<ul style="list-style-type: none">• A Local Ecosystem• Patterns in Nature• Life on Earth• Evolution of Australian Biota	<ul style="list-style-type: none">• The search for Better Health• Maintain a Balance• Blueprint of Life <p style="text-align: center;">Options (one of the following)</p> <ul style="list-style-type: none">• Biotechnology• Genetics• The Human Story• Biochemistry

EXCLUSIONS

2 Unit Senior Science may NOT be studied in Year 11 at the same time as 2 Unit Biology.

ASSESSMENT

Preliminary & HSC – Internal Assessment

Selection of tasks from the following

- *Examination
- *Practical Tests
- *Reports/Assignments
- *Fieldworks
- *Research Project

HSC – External Assessment 3 hour Examination

COSTS

A Year 11 and Year 12 Dot Point Biology may be required, approximately cost \$35 - \$40 each.

CONTACT PERSONS

Mr R Jovanovski - Head Teacher Science

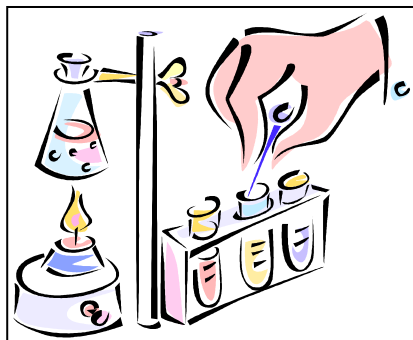
CHEMISTRY

2 UNITS

INTRODUCTION

The study of chemistry involves students working individually and in groups in practical work, fieldwork and interactive media which relate to theoretical concepts considered in the course. The course provides an understanding of Chemistry and its application in the context of the environment, society and technology.

Please note: With Chemistry, students can take up a further 4 units of Science from Biology, Physics and Earth & Environmental Science.



CAREERS IN CHEMISTRY

- Health Science
- Dietician
- Anaesthetist
- Pharmaceuticals
- Occupational Therapy
- Nanotechnologist
- Teacher – Science
- Speech Therapist
- Chemical Engineer
- Sport Scientist
- Chemist
- Nursing
- Pharmacist
- Speech Therapist
- Teacher - PD/Health/PE
- Forensics

CO - REQUISITES

It is necessary that students study the 2 Unit (or higher) Mathematics Course in Year 11 and Year 12.

CONTENT

Preliminary Course	HSC Course
<ul style="list-style-type: none">• The Chemical Earth• Metals• Water• Energy	<ul style="list-style-type: none">• Resources and materials• The Acidic Environment• Chemical Monitoring & Management <p style="text-align: center;">Options (one of the following)</p> <ul style="list-style-type: none">• Industrial Chemistry• The Biochemistry of Movement• Shipwrecks, Corrosion & Conservation• The Chemistry of Art• Forensic Chemistry

EXCLUSIONS

2 Unit Senior Science may NOT be studied in Year 11 (Preliminary Course) at the same time as 2 Unit Chemistry.

ASSESSMENT

Preliminary & HSC Course: (Internal Assessment)

Selection of tasks from the following

- *Examinations
- *Practical Tests
- *Reports / Assignments
- *Fieldworks
- *Research Project

HSC – External Assessment 3 hour Examination

COST

A Year 11 and Year 12 Dot Point book may be required, approximately cost \$35 - \$40 each.

CONTACT PERSONS

Mr R Jovanovski - Head Teacher Science

EARTH & ENVIRONMENTAL SCIENCE

2 UNITS

INTRODUCTION

Earth and Environmental Science in Stage 6 Science is the study of the Earth and its processes. The course aims to provide an understanding of systems and processes in both aquatic and terrestrial environments. It seeks to explore changes that have occurred during Earth's history, including changes in the lithosphere, atmosphere, hydrosphere, cryosphere and biosphere, and the evolution of organisms since the origin of life on Earth.

The study of planet Earth and its environments recognises that while humans are part of nature they continue to have a greater influence on the environment than any other species. Earth and Environmental Science is built on the premise that the natural environment is the host to all local environments and that, therefore, an understanding of the natural environment is fundamental to any analysis of more specific local environments.



CONT ENT

CAREERS IN EARTH & ENVIRONMENTAL SCIENCE

- Geologist
- Mining Engineering
- Environmental Scientist
- Metallurgist
- Ecologist
- Apprenticeships

Preliminary Course (120 indicative hours)	HSC Course (120 indicative hours)
<ul style="list-style-type: none"> • Planet Earth & Its Environment – A Five Thousand Million Year Journey (30 indicative hours) • The Local Environment (30 indicative hours) • Water Issues (30 indicative hours) • Dynamic Earth (30 indicative hours) 	<ul style="list-style-type: none"> • Tectonic Impacts (30 indicative hours) • Environments Through Time (30 indicative hours) • Caring for the Country (30 indicative hours) <p style="text-align: center;">Options (one of the following)</p> <ul style="list-style-type: none"> • Introduced Species & the Australian Environment • Organic Geology – A Non Renewable Resource • Mining & the Australian Environment • Oceanography

ASSESSMENT

Preliminary & HSC Course: (Internal Assessment)

Selection of tasks from the following

- *Open ended Examination
- *Practical Tests
- *Reports/Assignments
- *Fieldworks
- *Research Project

HSC – External Assessment 3 hour Examination

COSTS

Costs associated with excursions and study days may be incurred.

CONTACT PERSON

Mr R Jovanovski - Head Teacher Science

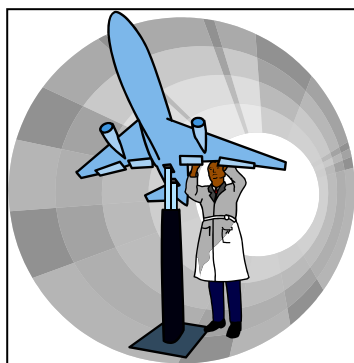
PHYSICS

2 UNITS

INTRODUCTION

The course provides students with an understanding of energy, matter and their interactions. Investigating Natural Phenomenon and then applying patterns, models (including mathematical ones), principles, theories and laws to expand the physical behaviour of the universe.

Students will apply investigative and problem-solving skills, effectively communicate the concepts and appreciate the study of Physics.



CAREERS IN PHYSICS

- Medicine
- Applied science
- Electrical
- Mining Industries
- Radiographer
- Nuclear medicine
- Teacher - Science
- Engineering
- Dentist
- Civil engineer
- Surveying
- Forensics
- Nanotechnologist

CO-REQUISITES

It is necessary that students study 2 Unit Mathematics Course in Year 11 and Year 12.

CONTENT

Preliminary Course	HSC Course (Core Topics)
<ul style="list-style-type: none">• The World Communicates• Moving World• Electrical Energy in the Home• The Cosmic Engine	<ul style="list-style-type: none">• Space• Motors & Generators• From Ideas to Implementation <p style="text-align: center;">Options (one of the following)</p> <ul style="list-style-type: none">• Geophysics• Medical Physics• Astrophysics• From Quantum to Quarks• The Age of Silicon

EXCLUSIONS

2 Unit Senior Science cannot be done at the same time.

ASSESSMENT

Preliminary & HSC (Internal Assessment)

Selection of tasks from the following

- *Examination
- *Practical Tests
- *Reports/Assignments
- *Fieldworks
- *Research Project

HSC – External Assessment 3 hour Examination

COST

A year 11 and Year 12 Dot Point Physics Book may be required, approximately cost \$35 - \$40 each.

CONTACT PERSON:

Mr R Jovanovski - Head Teacher Science

SENIOR SCIENCE

2 UNITS

INTRODUCTION

Senior Science Stage 6 caters to a wide range of students who wish to become scientifically literate citizens. The course encourages students to develop a range of practical skills including the use of current instrumentation, information technology and increased ability to communicate understanding. Senior Science Stage 6 focuses on all of these areas framed within the principles of Biology, Chemistry, Physics and Earth & Environmental Science.



CAREERS IN SENIOR SCIENCE

- Apprenticeships
- Technicians
- Engineering Services
- Surveyors Assistants
- IT Technicians
- Installers
- Communications
- Laboratory Assistant
- Horticulture

PRE-REQUISITES

It is assumed that students have achieved satisfactory results in the Year 10 course. Students cannot combine this course with another Science course in Year 11. Students who do other Science courses in Year 11 can transfer into this course for Year 12.

CONTENT

Preliminary Course (4 course units)	HSC Course (3 course units)
<ul style="list-style-type: none">• Water for Living• Plants• Humans at Work• The Local Environment	<ul style="list-style-type: none">• Lifestyle Chemistry• Medicine Technology• Information System <p style="text-align: center;">Options (one of the following)</p> <ul style="list-style-type: none">• Preservatives & Additives• Pharmaceuticals• Disasters• Space Science

ASSESSMENT

Preliminary & HSC (Internal Assessment)

A selection of tasks from the following

- *Examination
- *Practical Tests
- *Reports/Assignments
- *Fieldworks
- *Research Project

HSC – External Assessment 3 hour Examination

COST

A Year 11 & Year 12 Dot Point Senior Science book be required, approximately cost \$35 - \$ 40 each.

CONTACT PERSON

Mr R Jovanovski - Head Teacher Science

ANCIENT HISTORY

2 UNITS

INTRODUCTION

Ancient History consists of a 2 Unit course in both Year 11 & 12. There is an Extension Course (1 Unit) available in Yr 12 for those students who display high interest and outstanding ability, especially in relation to research skills. Students can do both Ancient and Modern History. Ancient History is an enquiry into past human experience that helps make the present easier to understand, such as the history of Ancient Egypt and Rome, investigating the past, case studies of personalities and periods from Ancient History.

CAREERS IN ANCIENT HISTORY

This course suits students who are interested in the ideas and achievements of the ancient world and the lessons to be learnt from them. It develops research skills, communication skills and logical thinking skills. History is an asset for any student contemplating university and it helps in careers such as archaeology, journalism, law, education and the diplomatic service. It is also of value for those with a real interest in History.



PREREQUISITES

No prerequisites for this course.

CONTENT

Preliminary Course	HSC Course
<p>Students will complete the following studies:</p> <p>Part I – Introduction</p> <p>a. Investigating the Past: History, Archaeology and Science.</p> <p>b. Case Studies</p> <p>Part II – Studies of Ancient Societies, Sites and Sources such as Deir-el Medina and Greek Society.</p> <p>Part III – Historical Investigation.</p>	<p>Students complete four studies:</p> <p>Part I – Core Study: Cities of Vesuvius – Pompeii and Herculaneum.</p> <p>Part II – Ancient Societies, such as Ancient Egypt, Greece or Rome.</p> <p>Part III – Personalities in Their Times, such as Julius Caesar and Egyptian pharaohs.</p> <p>Part IV – Historical Periods, such as the Near East, New Kingdom Egypt and the Development of the Greek World 800-500BC.</p>

External Examination	Internal Assessment
<p><i>Section 1 – Cities of Vesuvius – Pompeii and Herculaneum</i></p> <p>Part A</p> <p>Source-based objective response and short-answer questions</p> <p>Part B</p> <p>One source-based question</p> <p><i>Section II – Ancient Societies</i></p> <p>One question in parts</p> <p><i>Section III – Personalities</i></p> <p>One question in parts</p> <p><i>Section IV – Historical Periods</i></p> <p>Candidates answer one of two extended response alternatives</p>	<p>Knowledge and understanding of course content</p> <p>Source-based skills: analysis, synthesis and evaluation of historical information from a variety of sources</p> <p>Historical inquiry and research</p> <p>Communication of historical understanding in appropriate forms</p>

ASSESSMENT COSTS

Nil, however study days may be offered which could include some costs for those students who wish to attend them. Excursions relevant to course content may also be held.

CONTACT PERSON

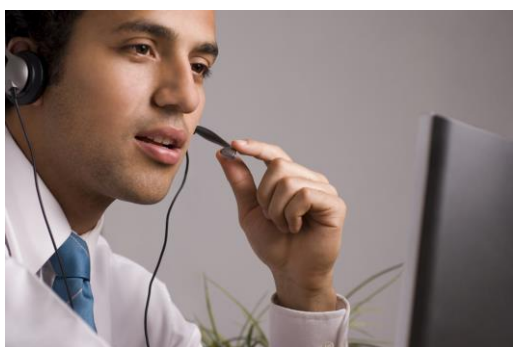
Mrs G Sainsbury - Head Teacher HSIE

BUSINESS STUDIES

2 UNITS

INTRODUCTION

The Business Studies course gives students the theoretical knowledge, practical skills and flexibility to be employed in a number of fields especially those which are business related. The course prepares students with the background knowledge for what is required to own and operate a small business. It will help them determine the feasibility of a small business idea and how to develop an operational plan. Students will acquire communication skills and learn to work as part of a team. Students will develop a better understanding of the dynamics of the current business environment. The course can help students to improve their research and reporting skills and may appeal to students interested in observing how individuals and business function in the commercial environment.



CAREERS IN BUSINESS

Students interested in accounting, banking and finance, credit management, insurance, marketing, entrepreneurship, personnel management, purchasing, warehousing and distribution, community organisations, retailing, market research and information, media and communications, hospitality and tourism will benefit from this course. The course is also useful for those students interested in running their own business.

PREREQUISITES

There are no formal prerequisites for the study of this subject.

CONTENT

Preliminary Course	HSC Course
Nature of Business Business Management Business Planning	Operations Marketing Finance Human Resources

ASSESSMENT

External Examination	Internal Assessment
<i>Section I</i> Objective response questions <i>Section II</i> Short-answer questions <i>Section III</i> Candidates answer one extended response question in the form of a business report <i>Section IV</i> Candidates answer one extended response question	Knowledge and understanding of course content Stimulus based skills Inquiry and research Communication of business information, ideas and issues in appropriate forms

COSTS

Costs associated with excursions and study days may be incurred.

CONTACT PERSON

Mrs G Sainsbury - Head Teacher HSIE

GEOGRAPHY

2 UNITS

INTRODUCTION

Geography is a unique subject because it enables students to look at the world from a number of different perspectives and to consider interactions between the natural and human environments. Geography seeks to investigate the world, including the natural and built environment and the role of people in shaping it. Geographers study the physical environment, natural resources, urban living, industrial and economic processes. Students will be involved in undertaking studies in the processes shaping our natural world, the forces that are currently controlling our economic development and the quality of life.



CAREERS IN GEOGRAPHY

The skills developed in Geography are transferable to many types of employment. It provides an important grounding for employment in local, state and federal government planning departments, environmental management organisations, national and state mapping authorities, CSIRO, tourism bodies and a variety of options in government and non-government organisations and educational institutions. Geography provides many of the elements of the Environmental Science course without the Chemistry component. It could be used to supplement work studied in that course. Students with a real interest in Geography and in travel would benefit from this course. Students with an interest in practical & field work would also benefit from enrolment in Geography.

PREREQUISITES

There are no prerequisites for this course.

CONTENT

Preliminary Course	HSC Course
<ul style="list-style-type: none">• Biophysical Interactions• Global Challenges• Senior Geography Project (SGP)	<ul style="list-style-type: none">• Ecosystems At Risk• Urban Places• People and Economic Activity

PREREQUISITES

There are no prerequisites.

ASSESSMENT

External examination	Internal assessment
<i>Section I</i> Objective response questions <i>Section II</i> 5 Short-answer questions <i>Section III</i> Candidates answer two extended response questions	Knowledge and understanding of course content Geographical tools and skills Geographical inquiry and research, including fieldwork Communication of geographical information, ideas and issues in appropriate forms

COSTS

Costs associated with excursions and study days may be incurred.

CONTACT PERSON

Mrs G Sainsbury - Head Teacher HSIE

LEGAL STUDIES

2 UNITS

INTRODUCTION

Everyone should have an understanding of their rights and responsibilities under our legal system. This course introduces students to the basic structure and operation of the legal system. Students will learn about the personnel and process of courts and parliament and the differences between criminal and civil law, courts and tribunals, solicitors and barristers. A major focus in the HSC course is Crime, and there is the opportunity to choose from a number of focus studies. Students are also given the opportunity to evaluate the legal system's treatment of disadvantaged groups.



CAREERS IN LEGAL STUDIES

Legal Studies is for all students as all of us need to have a basic understanding of the Australian legal system and how it impacts upon us. All students need to know their rights and responsibilities in relation to such areas as:-crime, the workplace, consumer law, family law, the global environment technological change, world order, shelter, indigenous people.

The knowledge and skills gained from this subject will also lend themselves to particular occupations and tertiary courses. Some of these areas include: police and law enforcement, security guard, lawyer, para-legal services, law clerk, court officer, social worker, teacher and retail worker.

PREREQUISITES

There are no prerequisites for this course.

CONTENT

Preliminary Course	HSC Course
The Preliminary Course consists of three sections: Core Part I – The Legal System Core Part II – The Individual and the Law Core Part III – The Law in Practice	The HSC Course consists of three sections: Core Part I – Crime Core Part II – Human Rights Part III – Two options chosen from Consumers, Family, Indigenous Peoples, World Order, Workplace, Global Environment and Protection Shelter

ASSESSMENT

External examination	Internal assessment
<i>Section I: Core Crime & Human Rights</i> Objective response questions <i>Section II: Core Part A Human Rights</i> Short-answer questions <i>Part B Crime</i> One extended response question <i>Section III: Options</i> Candidates answer two extended response questions, each from a different option	Knowledge and understanding of course content Inquiry and research Communication of Legal Studies information, issues and ideas in appropriate forms

COSTS

Costs associated with excursions and study days may be incurred.

CONTACT PERSON

Mrs G Sainsbury - Head Teacher HSIE

SOCIETY AND CULTURE

2 UNITS

INTRODUCTION

The key focus of Society in Culture is the interaction of people, societies, cultures, environments and time. Society and Culture provides an opportunity for students to develop a large number of personal and transferrable skills. Communication and presentation skills, improvement of conceptual and problem solving, ability, teamwork, verbal reasoning skills, leadership and research and emphasized in this course. It gives students an insight into human behavior and relationships. It helps students develop a means to understand and analyse both overseas and local cultures by equipping them with an understanding of concepts, methodologies and values relating to a range of human issues.

PREREQUISITES

There are no pre-requisites for this course.

CONTENT

Preliminary Course			
Three topics are studied:			
<ul style="list-style-type: none">• The Social and Cultural World• Personal and Social Identity• Intercultural Communication			
HSC Course			
All do a Personal Interest Project and study 'Social and Cultural Change and Continuity'. Then students will do TWO of the following depth studies:			
Popular Culture	Belief Systems	Equality & Difference	Work & Leisure

ASSESSMENT

External examination	Internal assessment
Written examination <i>Section I – Core</i> Objective response questions Short-answer questions <i>Section II</i> Candidates answer one question in parts on a Depth Study <i>Section III</i> Candidates answer one extended response question on a different Depth Study to that chosen in Section II Personal Interest Project	Knowledge and understanding of course content Application and evaluation of social and cultural research methodologies Communication of information, ideas and issues in appropriate forms

PERSONAL INTEREST PROJECT

Society and Culture students must each undertake, on an individual basis, a Personal Interest Project worth 40% of the HSC examination mark. The Personal Interest Project requires students to select a suitable topic related to the course, develop and apply appropriate methodologies and submit a completed project containing the required components.

COSTS

Students will be expected to meet the costs associated with excursions, and the Personal Interest Project must be bound.

CONTACT PERSON

Mrs G Sainsbury - Head Teacher HSIE

STUDIES IN RELIGION

2 UNITS

INTRODUCTION

Studies of Religion consists of a 2 unit course in both Year 11 and Year 12. The course provides an understanding and critical awareness of the nature and significance of religion and the influence of belief systems and religious traditions on individuals and within society. Students will develop knowledge and understanding about the nature of religion and belief systems in local and global contexts, the influence and expression of religion and belief systems in Australia and religious traditions and their adherents.

CAREERS RELATING TO STUDIES IN RELIGION

Studies of Religion provides a context within which to develop competencies essential for the acquisition of effective, higher order thinking skills necessary for further education, work and everyday life. During the course students develop the ability to research and analyse information, discuss and explain issues in written and oral form, develop competence to work with others and in a team and develop, implement and evaluate solutions to problems, developing competence in solving problems.

PRE-REQUISITES

There are no formal pre-requisites for this course.

CONTENT

Preliminary Course	HSC Course
Topics Studied: <ul style="list-style-type: none">• Nature of Religion and Beliefs• Religious Tradition Study 1• Religious Tradition Study 2• Religious Tradition Study 3• Religions of Ancient Origin• Religion in Australia pre 1945	Topics Studied: <ul style="list-style-type: none">• Religion and Belief Systems in Australia post 1945• Religious Tradition Depth Study 1• Religious Tradition Depth Study 2• Religious Tradition Depth Study 3• Religion and Peace• Religion and Non Religion

ASSESSMENT

In school assessment and 3 hour exam

COSTS

Nil

CONTACT PERSON

Mrs G Sainsbury – Head Teacher HSIE

WORK STUDIES

1 OR 2 UNIT COURSE TO BE STUDIED OVER ONE OR TWO YEARS – PRELIMINARY AND/OR HSC

INTRODUCTION

Work Studies consists of a 2 Unit Course in both Yr 11 and 12. The strongly practical orientation of the course is intended to give students useful experiences against which to test their emerging career and/or study preferences. It also allows for students to develop a range of skills and attitudes in actual workplace contexts. The value of these experiences will be reinforced by the school-based components of the course, which provide both a knowledge base and the opportunity for structured reflection on workplace learning.

PRE-REQUISITES

There are no pre-requisites for this course.

COURSE STRUCTURE/CONTENT

Course	Unit	Indicative Hours	Structure	
			Core	Modules
1 year (Preliminary or HSC)	1	60	30 hrs	30 hrs
1 year (Preliminary or HSC)	2	120	30 hrs	90 hrs
2 year (Preliminary then HSC)	1	120	30 hrs	90 hrs
2 year (Preliminary then HSC)	2	240	30 hrs	210 hrs

COURSE MODULES

Core Topic

1. In the workplace
2. Preparing job applications
3. Workplace Communication
4. Teamwork and Enterprise Skills
5. Managing Work and Life Commitments
6. Personal Finance
7. * Workplace Issues (the prerequisite module is *In the Workplace*)
8. * Self-Employment (the prerequisite module is *Managing Work and Life Commitments*)
9. * Team Enterprise Project (the prerequisite module is *Teamwork and Enterprise Skills*)
10. Experiencing Work (one or two of these modules may be undertaken) provided that they do not exceed 50 per cent of course time)
11. School-Developed Module (one or two of these modules may be undertaken, provided that they do not exceed 25 percent of the course time).

Modules 7,8 and 9, indicated by an asterisk, require the completion of prerequisite modules or appropriate prior learning

ASSESSMENT

No external HSC Examination. Work studies will have an unmoderated school assessment mark recorded on HSC.

Internal Assessment

- Knowledge and understanding 30%
- Skills 70%

CONTACT PERSON

Mrs G Sainsbury - Head Teacher HSIE

FOOD TECHNOLOGY

2 UNITS

INTRODUCTION

Students will develop the knowledge and understanding about the production, processing and consumption of food, the nature of food and human nutrition, and food industries. Skills will be developed in researching, analyzing, food preparation, resource management.

STUDENTS WHO WOULD BENEFIT FROM DOING THIS COURSE?

This is a challenging and diverse course which would be suitable for students with an interest in nutrition, food production and produce development. The course contains practical experiences in food experiments with an emphasis on the theoretical content of food science and analysis of the food industry.

CONTENT

Preliminary

Food Availability & Selection	(30%)
Food Quality	(40%)
Nutrition	(30%)

HSC

The Australian Food Industry	(15%)
Food Manufacture	(30%)
Food Product Development	(30%)
ONE OPTION MUST BE STUDIED from:	
Contemporary Food Issues in Nutrition	(25%)
Contemporary Food Issues in the Marketplace	(25%)

ASSESSMENT

Both practical and theory components of this course will be assessed. The practical component may be assessed by experiments, food preparations and presentations. The HSC examination will be three hours in duration consisting of two extended response questions, multiple choice and short answer questions.

COSTS

Preliminary Year	\$80.00
HSC Year	\$80.00

Excursions may be organized throughout the course depending on industry facilities.

CONTACT PERSON

Mr D Fromson - Head Teacher TAS (Relieving)

INDUSTRIAL TECHNOLOGY TIMBER PRODUCTS & FURNITURE TECHNOLOGIES

2 UNITS

INTRODUCTION

This subject offers students the opportunity to study technologies, equipment and materials used by the timber and furniture industries and to develop skills through planning and constructing projects related to the industry. This is a Category A subject since 2009 and can be used in calculating an ATAR.

STUDENTS WHO WOULD BENEFIT FROM DOING THIS COURSE?

- Students who are interested in acquiring practical skills related to the timber & furniture industry.
- Students who have an interest in furniture design and assembly technologies.
- Students seeking a future in the furniture industry or timber related industries.
- Students who may wish to receive a ATAR.

PRE-REQUISITES

There are no pre-requisites for this course.

Exclusion: Students can study only ONE Industrial Technology course.

CONTENT – Preliminary Year and HSC Year

Preliminary Year	HSC Year
<p>Students will construct a series of practical projects. Project work will require the completion of a Project Documentation Folio as evidence of practical work and project management.</p> <p>The Preliminary course is structured as follows:</p> <ul style="list-style-type: none"> • Industry Study • Design • Management and communication • Production • Industry related Manufacturing Technologies 	<p>Students will construct a major project with supporting documentation (folio). These will be marked by external examiners and make up 60% of the HSC examination mark. A 1 ½ hour written examination will make up the remainder 40%.</p> <p>The HSC course is structured as follows:</p> <ul style="list-style-type: none"> • Industry Study • Major Project • Production • Industry Related Manufacturing Technologies

ASSESSMENT

Preliminary: School assessment

HSC: School assessment + External assessment (60% project/folio; 40% Exam)

COSTS

Preliminary (Year 11): \$40

HSC (Year 12): \$25 + cost of Major Project materials

CONTACT PERSON

Mr D Fromson - Head Teacher TAS (Relieving)

PERSONAL DEVELOPMENT, HEALTH & PHYSICAL EDUCATION

2 UNITS

INTRODUCTION

The PD/H/PE course offers learning opportunities which enable students to make informed decisions about the health of individuals and communities.

STUDENTS WHO WOULD BENEFIT FROM DOING THIS COURSE?

This course provides a direct link with study and vocational pathways in the areas of recreational, paramedical, movement and health sciences. Related career opportunities are expanding and gaining recognition throughout the community as legitimate fields of endeavour.

The course is academically demanding and requires rigorous application to all aspects.

PRE-REQUISITES

There are no formal pre-requisites, however, interest in, and aptitude for movement analysis, human biology and health studies is desirable.

CONTENT

Preliminary

Core Strands:

The Body in Motion (30%)

Better Health for Individuals (30%)

Option Modules:

Fitness Choices

Outdoor Recreation

First Aid or (Certificate offer)

Composition & Performance

} 2 to be completed
(20% time each)

HSC

Core Strands:

Health Priorities in Australia (30% time)

Factors Affecting Performance (30% time)

Sports Medicine

Improving Performance

Equity and Health

The Health of Young People

Sport and Physical Activity in Australian Society

} 2 to be completed
(20% of time each)

EXCLUSIONS: Nil

ASSESSMENT

School Assessment: Both Preliminary and HSC Courses are internally assessed. Tasks include: Formal exams, Research and Lab Reports, Practical presentations.

HSC Examination: A three hour written paper (multiple choice; short answer; extended responses).

COSTS: Use of community facilities and equipment for some practical work will involve a small cost. Payment for these activities will be made at the venue. Excursions will also incur a cost and details will be given several weeks before such activities. Particular "options" will require a fee if students elect to do them, but accreditation will be provided as well (eg, First Aid is approximately \$80).

CONTACT PERSON:

Ms A Wilson– Head Teacher PD/H/PE (Relieving)

SPORT, LIFESTYLE AND RECREATION

2 UNITS OVER 2 YEARS (NON ATAR)

INTRODUCTION

Sport, Lifestyle and Recreation makes a positive contribution to the total well-being of students. They develop knowledge and understanding of the value of activity, increased levels of movement skill and competence in a wide variety of sport and recreation contexts.

STUDENTS WHO WOULD BENEFIT FROM DOING THIS COURSE?

This course caters for a wide range of student needs and interests in both practical and theoretical aspects. It can assist students in developing:

- The qualities of a discerning consumer as an intelligent critic of physical activity and sport.
- Improved performance of skill in particular sports.
- The capacity to adopt various roles in community sport and recreation (administration/coaching).

The Sport and Recreation industry is a major growth industry.

PRE-REQUISITES

- There are no pre-requisites for the course.
- The course features a highly practical focus: physical activity being both an area of study and a medium for learning.
- Students should not select the course if they are not prepared to fully involve themselves in physical activity.

CONTENT

The modules covered by students at this school include:

- Healthy Lifestyle
- Sports Administration
- First Aid Sports Injuries
- Games and Sports Application I & II
- Individual Games and Sports Applications
- Sports Coaching and Training

EXCLUSIONS

Nil

ASSESSMENT

- There is no formal HSC Exam in this course.
- Assessment will be both skill and knowledge bases
- A variety of assessment tasks are set based on the modules studied.

COSTS

- Use of community facilities/equipment for some activities will involve a small cost. Payment for these activities will be weekly and payable at the venue.
- Excursions will also incur a cost and details of these activities will be given several weeks before the event.

CONTACT PERSON

Ms A Wilson– Head Teacher PD/H/PE (Relieving)

COMMUNITY & FAMILY STUDIES

2 UNITS

INTRODUCTION

Within this course students will develop knowledge and understanding of

- The management of resources eg, time, money
- The reasons people join groups: leadership styles; stress management and conflict resolution strategies
- The way families support individual members and the role communities play
- Methods used to conduct research
- Parenting techniques
- Three groups are studied in detail, these may be the homeless, youth, the aged, single parents or cultural groups.

Practical lessons will also enable students to implement resource management and experience the planning that is required for families and parents to prepare meals.

STUDENTS WHO BENEFIT FROM THIS COURSE?

This course is suited to students who have an interest in fields such as welfare, management positions, sociology, teaching, nursing, psychology and child care.

PRE-REQUISITES

There are no formal pre-requisites. Students require strong research and reporting skills, the ability to work as part of a team, refined organization and management skills.

CONTENT

Preliminary

Resource Management (20% of course time)
Individuals & Groups (40% of course time)
Families and Communities (40% of course time)

HSC

Research Methodology (25% of course time)
Groups in Context (25% of course time)
Parenting and Caring (25% of course time)

ONE OPTION MUST BE STUDIED from: Family and Societal Interactions } (25% of course time)
Social Impact of Technology }
Individuals and work }

PARTICULAR COURSE REQUIREMENT

As part of the HSC, students are required to complete an Independent Research Project. The focus of the IRP should be related to the course content of one or more of the following areas: individuals, groups, families, communities, resource management. This is marked internally by the class teacher. Research work is partially completed in class.

ASSESSMENT

- Assessment may include written examinations, case studies and interviews, oral presentations, multi-media presentations and research projects.
- There is a single HSC examination of 3 hours duration, and consists of multiple choice, short answer and long answer questions.
- Candidates attempt one question from the option module studies.

COSTS

\$40.00 to cover a range of practical experiences.

CONTACT PERSON

Ms A Wilson - Head Teacher PD/H/PE (Relieving)

JAPANESE BEGINNERS COURSE

INTRODUCTION

Language is the basis of all communication and human interaction. By learning a second or subsequent language, students develop knowledge, understanding and skills for successful participation in the dynamic world of the 21st century. Studying Japanese can be both interesting and rewarding. It provides an insight into a country with a long history and a culture that features both traditional and modern elements.

STUDENTS WHO WOULD BENEFIT FROM DOING THIS COURSE?

This course is for students with an interest in the language and culture of Japan. This ability to communicate in Japanese, together with other skills, can also enhance career opportunities in many areas such as trade, tourism, diplomacy, banking, retail, technology, and education.

PRE-REQUISITES

Nil

CONTENT

Students will develop their skills in Japanese and an insight into Japanese culture through a range of topics.

EXCLUSIONS

Students must NOT have studied it in Years 9 and 10 as an elective

HSC ASSESSMENT

Internal Assessment	Weighting
Speaking Skills	20%
Listening Skills	30%
Reading Skills	30%
Writing Skills	20%

External Examination	Mark
Speaking Skills	20%
Listening Skills	30%
Reading Skills	30%
Writing Skills	20%

COST

Nil

BONUS POINTS

This course can be used in the calculation of the ATAR used to gain entry into university. If you study Japanese you may be eligible to receive bonus points for admission to many universities. At Newcastle University, 2 bonus points are awarded for a band 5 or 6 in Beginners Japanese for entry into a variety of degrees.

CONTACT PERSON

Mrs S Ingram

Mr L Harradine – Head Teacher CAPAL

MUSIC 1

2 UNITS

INTRODUCTION

Music is an art form which can be enjoyed by all. Students are given the opportunity to make music in small and large groups as well as individually and they are encouraged to appreciate the many and varied music styles which exist, through listening, composing and performing. This is a matriculation course and can be used in the calculation of the ATAR and to gain entry into music and other courses at University and TAFE.

STUDENTS WHO WOULD BENEFIT FROM DOING THIS COURSE?

This course is for students with an interest in a variety of music styles. Students may be already proficient musicians, or beginners with little knowledge. The students' musical tastes and interests may vary widely and all can be catered for in this course.

PRE-REQUISITES

You do not need to have done elective music in Years 8-10.

You do not need to be able to read and write music.

All students will be required to sing or play an instrument.

CONTENT

Preliminary

Students will perform, compose, analyse and listen to a variety of musical styles through a study of 3 topics (chosen from a list of 30, eg Australian Music, Popular Music and Music of Another Culture).

HSC

Students will perform, compose, analyse and listen to a variety of musical styles through a study of 3 topics, different to those already studied in Year 11 (chosen from the same list of 30, eg Rock Music, Jazz and Theatre Music).

EXCLUSIONS

Nil

ASSESSMENT

Preliminary		Internal HSC		External HSC	
Performance	25%	Performance	10%	Core Performance	10%
Musicology	25%	Musicology	10%	Aural	30%
Composition	25%	Composition	10%	Electives	60%
Aural	25%	Aural	25%		
		Electives	45%		

Electives – Any combination of Performance, Musicology or Composition

COSTS

\$20.00

CONTACT PERSON

Mrs M Ward

Mr L Harradine – Head Teacher CAPAL

VISUAL ARTS

2 UNITS

INTRODUCTION

This course is designed for students who enjoy the practices of art making, art criticism and art history. A Body of Work is developed for the HSC year which reflects the students knowledge and understanding of the practice and resolution of conceptually strong work.

STUDENTS WHO WOULD BENEFIT FROM DOING THIS COURSE?

This subject is suitable for any student who has the inclination to develop concepts and thoughts along a creative path. The wide variety of media allows all students to develop works to a successful end. The course counts towards the ATAR. Students interested in careers related to any Arts, Communication or Design field would benefit from this course.

PRE-REQUISITES

Nil

CONTENT

Preliminary

- Making Artworks
- Art Criticism and Art History

HSC

- Development of Body of Work
- Art Criticism and Art History

EXCLUSIONS

IU & 2U Photography students cannot include Photography in B.O.W.

IU Visual Design students cannot include Visual Design projects in the B.O.W.

ASSESSMENT

Preliminary - B.O.W. and V.A.P.D. – 50%

Research Studies & Yearly Exam – 50%

HSC

- Development of B.O.W. – 50% (including V.A.P.D.)

Art Criticism and Art History, including 5 Case Studies = 50%

External

- 1 ½ hrs written paper = 50%

Body of Work = 50%

COSTS

\$30 + cost of any specialised equipment/material.

CONTACT PERSONS

Mr P Frazier

Mr L Harradine – Head Teacher CAPAL

VET Course Information 2017

VET BROCHURES

TAFE delivered Vocational Education and Training (TVET)

There are some VET courses which are delivered at TAFE NSW Campuses, these are referred to as TVET Courses. TVET courses are offered as part of the Higher School Certificate. They enable students in Years 11 and/or 12 to study selected TAFE vocational course while still at school. These courses allow students to gain nationally recognized vocational qualification, accreditation with industry and the workplace as part of the Australian Qualifications Framework (AQF). These courses each have a specific workplace component that requires students to demonstrate competencies gained.

Many of the TVET courses have no external examination and do **not contribute to the ATAR**. Examples include: Sports and Fitness, Children's Services, Community Services, Hairdressing.

Important things to consider when selecting TVET courses.

- Courses are delivered 4 hours once a week (usually 2-6pm Mondays and Wednesdays) at a local TAFE Hunter Institute Campus (Belmont, Glendale, Tighes Hill, Newcastle, Maitland, Ourimbah, Gosford)
- Transport needs to be arranged by the student. Travel to TAFE may involve several buses home and significant travel time
- Students take responsibility for their own learning in an adult learning environment
- *Attendance is required for all lessons.* One missed lesson equals one week of course content missed
- School based class work **MUST** be kept up to date
- Failure to comply with TAFE student responsibilities could render a student's ineligible for the award of Stage 6 credentials (RoSA, HSC, Cert 11, SOA)

TVET courses are dual accredited, giving both HSC and AQF qualifications and advanced standing for further study at TAFE. **Refer to the TAFE Credit Transfer website at www.det.nsw.edu.au/hscsafe**

CPC20211 Certificate II in Construction Pathways (Release 3) (CPC08 release V9.1)

Statement of Attainment towards CPC20211 Certificate II in Construction Pathways (CPC08 release V9.1)

2017 STAGE 6 COURSE DESCRIPTION – CONSTRUCTION

This Course is available as	2Unit x 1year/120 hours	2Unit x 2years/240 hours	4Unit x 1year/240 hours
<p><i>The volume of learning usually includes 240 indicative hours and a minimum of 70 hours of work placement. All activities that the learner is required to be engaged in to complete this course are conducted under supervision.</i></p>			
<p style="text-align: center;"><i>Our RTO is committed to providing high quality training to students. Please discuss course patterns with your school.</i></p>			

Board Developed Course	Category B status for Australian Tertiary Admission Rank (ATAR)
<p>This curriculum framework includes courses which are accredited for the HSC and provides students with the opportunity to obtain nationally recognised vocational qualifications. This is known as dual accreditation.</p>	
<p>Course description - This course is designed for students who wish to develop knowledge and skills to commence a career and be an effective employee in the construction industry. Students who are assessed as competent in sufficient units of competency will be eligible for a full Certificate qualification; partial completion will lead to a Statement of Attainment. Qualification pathway information is available from the Australian Apprenticeships Training Information Service:</p>	

<p>Course structure: The following content will be addressed as part of this Qualification. Reduced or modified patterns of delivery may target specific units of competency. <i>Please discuss units of competency with your school.</i></p>			
Compulsory/Core Units – HSC Examinable		Students may study a selection of the following elective units.	
CPCCCM1012A	Work effectively and sustainably in the construction industry	CPCCCA2011A	Handle carpentry materials
CPCCCM1013A	Plan and organise work	CPCCCA2002B	Use carpentry tools and equipment
CPCCCM1014A	Conduct workplace communication	CPCCJN2001A	Assemble components
CPCCCM1015A	Carry out measurements and calculations	CPCCJN2002B	Prepare for off-site manufacturing processes
CPCCCM2001A	Read and interpret plans and specifications	CPCCWF2001A	Handle wall and floor tiling materials
CPCCOHS2001A	Apply OHS requirements, policies and procedures in the construction industry	CPCCWF2002A	Use wall and floor tiling tools and equipment
CPCCOHS1001A	Work safely in the construction industry	CPCCCM2006B	Apply basic levelling procedures
CPCCCM2005A	Use construction tools and equipment	CPCCBL2001A	Handle and prepare bricklaying and blocklaying materials
		CPCCBL2002A	Use bricklaying and blocklaying tools & equipment
		CPCCCO2013A	Carry out concreting to simple forms
		CPCCCA2003A	Erect and dismantle formwork for foots and slabs on ground

<p>Course contribution (to be made directly to school): \$ 80 Course contributions are made to cover the ongoing costs of consumables and materials used as part of this course. <i>If you are unable to make contributions or are experiencing financial difficulty, please contact your school.</i></p>	
<p>Refunds: Students who exit the course before completion may be eligible for a partial refund of fees. The amount of the refund will be pro-rata, dependent upon the time the student has been enrolled in the course. <i>Please discuss any matters relating to refunds with your school</i></p>	
<p>Course specific resources and equipment: Due to the specific nature of training and assessment in this industry area, the following specific resources and equipment are required of students undertaking this course. <i>Please discuss with your school if you are unable to, or have difficulty meeting these requirements.</i></p>	<p>Enclosed leather shoes</p>
<p>Exclusions: VET course exclusions can be checked on the Board’s website at www.boardofstudies.nsw.edu.au/voc_ed/exclusions.html.</p>	

Assessment and course completion

Competency-based assessment

Students in this course work to develop the competencies, skills and knowledge described by each unit of competency. To be assessed as competent a student must demonstrate that they can effectively carry out tasks to industry standard. Students will be progressively assessed as 'competent' or 'not yet competent' in individual units of competency. Students may apply for Recognition of Prior Learning provided suitable evidence of competency is submitted.

Credit Transfer and Recognition of Prior Learning (RPL)

Our RTO acknowledges the experience and prior learning of our students. Students who are able to present transcripts from other Australian RTOs or who are able to present relevant experiences in work may qualify for Credit Transfer (CT) or Recognition of Prior Learning. All applications for CT or RPL should be made to the course teacher.

Mandatory Work Placement

Students undertaking this course are required to complete work placement to a minimum hours as specified below. Work placement involves the student completing real work experiences in industry settings. In some courses, in-school events may contribute to mandatory work placement hours. Where this is possible, students will be fully informed upon enrolment.

- 2 Unit x 1 year courses: 35 hours
- 2 Unit x 2 years courses: 70 hours
- 4 Units x 1 year courses 70 hours
- Some Specialisation Courses may require additional work placement

Optional HSC examination

Students completing this course are eligible to sit an optional, written HSC examination. The purpose of the examination is to provide a mark which may be used in the calculation of the ATAR. The examination is independent of the competency-based assessment undertaken during the course and has no impact on the eligibility to receive an AQF VET qualification.

Specialisation studies

Students may be offered the opportunity to undertake additional units of competency and credit towards their qualifications via Specialisation Studies. Information will be made available to students where appropriate.

N Determinations

Where a student has not met NSW Board of Studies, Teaching & Educational Standards (BOSTES) course completion criteria, (including meeting work placement requirements), they may receive an 'N' award warning (course not satisfactorily completed). Students issued with an 'N' award warning will be issued with a rectification which must be completed. Students who receive more than 2 N awards may be at risk of not completing BOSTES requirements and may not be awarded the appropriate units of credit towards their HSC. Any unit of competency achieved will be awarded as part of the VET qualification.

Appeals

Students may lodge appeals against assessment decisions or 'N' determinations through their school.

Qualification changes and updates

Due to the dynamic nature of VET, qualifications may change during the course of study. The RTO will ensure that students are fully informed of these changes and may transition students to the latest qualification during the course. The RTO will ensure that any change will be made with a minimum of disruption.

Employability skills:

There are eight Employability Skills: communication, teamwork, problem solving, initiative and enterprise, planning and organising, self-management, learning and technology. A summary of the employability skills developed through this qualification can be downloaded from <http://employabilityskills.training.com.au/>

School-based Apprenticeships and Traineeships (SBATs)

A school-based traineeship is available in this course.

To express an interest or obtain further information go to <http://www.sbatjobs.info/>

Your school SBAT Coordinator, Careers Advisor, VET Coordinator or VET Teacher is available to discuss apprenticeship and traineeships as part of your HSC.

By enrolling in a VET qualification in NSW Public Schools Tamworth RTO 90162, you are choosing to participate in a program of study that will give you the best possible direction towards a nationally recognised qualification. You will be expected to complete assessments relevant to the qualification and adhere to the requirements of the NSW Board of Studies, Teaching and Educational Standards.

MEM10105 Certificate I in Engineering (MEM05 release 11.1)

Statement of Attainment towards MEM10105 Certificate I in Engineering (MEM05 release 11.1)

2017 STAGE 6 COURSE DESCRIPTION – METAL AND ENGINEERING

This Course is available as	2Unit x 2years/240 hours		
<i>The volume of learning usually includes 240 indicative hours and a minimum of 70 hours of work placement. All activities that the learner is required to be engaged in to complete this course are conducted under supervision.</i>			
<i>Our RTO is committed to providing high quality training to students. Please discuss course patterns with your school.</i>			

Board Developed Course	Category B status for Australian Tertiary Admission Rank (ATAR)
This curriculum framework includes courses which are accredited for the HSC and provides students with the opportunity to obtain nationally recognised vocational qualifications. This is known as dual accreditation.	
Course description - This course is designed for students who wish to develop knowledge and skills to commence a career and be an effective employee in the engineering and manufacturing industry. Students who are assessed as competent in sufficient units of competency will be eligible for a full Certificate qualification; partial completion will lead to a Statement of Attainment. Qualification pathway information is available from the Australian Apprenticeships Training Information Service :	

Course structure: The following content will be addressed as part of this Qualification. Reduced or modified patterns of delivery may target specific units of competency. *Please discuss units of competency with your school.*

Compulsory/Core Units – HSC Examinable		Possible Elective Units – teacher will advise	
MEM16007A	Work with others in a manufacturing, engineering or related environment	MEM03003B	Perform sheet and plate assembly
MEM12023A	Perform engineering measurements	MEM11011B	Understand Manual Handling
MEM13014A	Apply principles of occupational health and safety in the work environment	MEM09002B	Interpret Technical Drawing
MEM12024A	Perform computations	MEM03001B	Perform manual production assembly
MEM14004A	Plan to undertake a routine task		
MEM15002A	Apply quality systems		
MEM15024A	Apply quality procedures		
MEM18001C	Use hand tools		
MEM18002B	Use power tools/hand held operations		

Students will also complete additional HSC content to fulfil the NSW BOSTES syllabus/examinable requirements for this course

Course contribution (to be made directly to school): Yr11 \$50 Yr12 \$50

Course contributions are made to cover the ongoing costs of consumables and materials used as part of this course.

If you are unable to make contributions or are experiencing financial difficulty, please contact your school.

Refunds: Students who exit the course before completion may be eligible for a partial refund of fees. The amount of the refund will be pro-rata, dependent upon the time the student has been enrolled in the course.

Please discuss any matters relating to refunds with your school

Course specific resources and equipment:

Due to the specific nature of training and assessment in this industry area, the following specific resources and equipment are required of students undertaking this course.

Please discuss with your school if you are unable to, or have difficulty meeting these requirements.

- **Fully Enclosed Footwear**

Exclusions:

VET course exclusions can be checked on the Board's website at www.boardofstudies.nsw.edu.au/voc_ed/exclusions.html.

Enrolment in a Certificate I Engineering excludes you from studying Industrial Technology - Metals and Engineering focus area.

Assessment and course completion

Competency-based assessment

Students in this course work to develop the competencies, skills and knowledge described by each unit of competency. To be assessed as competent a student must demonstrate that they can effectively carry out tasks to industry standard. Students will be progressively assessed as 'competent' or 'not yet competent' in individual units of competency. Students may apply for Recognition of Prior Learning provided suitable evidence of competency is submitted.

Credit Transfer and Recognition of Prior Learning (RPL)

Our RTO acknowledges the experience and prior learning of our students. Students who are able to present transcripts from other Australian RTOs or who are able to present relevant experiences in work may qualify for Credit Transfer (CT) or Recognition of Prior Learning. All applications for CT or RPL should be made to the course teacher.

Mandatory Work Placement

Students undertaking this course are required to complete work placement to a minimum hours as specified below. Work placement involves the student completing real work experiences in industry settings. In some courses, in-school events may contribute to mandatory work placement hours. Where this is possible, students will be fully informed upon enrolment.

- 2 Unit x 1 year courses: 35 hours
- 2 Unit x 2 years courses: 70 hours
- 4 Units x 1 year courses 70 hours
- Some Specialisation Courses may require additional work placement

Optional HSC examination

Students completing this course are eligible to sit an optional, written HSC examination. The purpose of the examination is to provide a mark which may be used in the calculation of the ATAR. The examination is independent of the competency-based assessment undertaken during the course and has no impact on the eligibility to receive an AQF VET qualification.

Specialisation studies

Students may be offered the opportunity to undertake additional units of competency and credit towards their qualifications via Specialisation Studies. Information will be made available to students where appropriate.

N Determinations

Where a student has not met NSW Board of Studies, Teaching & Educational Standards (BOSTES) course completion criteria, (including meeting work placement requirements), they may receive an 'N' award warning (course not satisfactorily completed). Students issued with an 'N' award warning will be issued with a rectification which must be completed. Students who receive more than 2 N awards may be at risk of not completing BOSTES requirements and may not be awarded the appropriate units of credit towards their HSC. Any unit of competency achieved will be awarded as part of the VET qualification.

Appeals

Students may lodge appeals against assessment decisions or 'N' determinations through their school.

Qualification changes and updates

Due to the dynamic nature of VET, qualifications may change during the course of study. The RTO will ensure that students are fully informed of these changes and may transition students to the latest qualification during the course. The RTO will ensure that any change will be made with a minimum of disruption.

Employability skills:

There are eight Employability Skills: communication, teamwork, problem solving, initiative and enterprise, planning and organising, self-management, learning and technology. A summary of the employability skills developed through this qualification can be downloaded from <http://employabilityskills.training.com.au/>

School-based Apprenticeships and Traineeships (SBATs)

A school-based traineeship is available in this course.

To express an interest or obtain further information go to <http://www.sbatjobs.info/>

Your school SBAT Coordinator, Careers Advisor, VET Coordinator or VET Teacher is available to discuss apprenticeship and traineeships as part of your HSC.

By enrolling in a VET qualification in NSW Public Schools Tamworth RTO 90162, you are choosing to participate in a program of study that will give you the best possible direction towards a nationally recognised qualification. You will be expected to complete assessments relevant to the qualification and adhere to the requirements of the NSW Board of Studies, Teaching and Educational Standards.

SIT20213 Certificate II in Hospitality (SIT12 release 2)*
Statement of Attainment towards SIT20213 Certificate II in Hospitality (SIT12 release 2)*

2017 STAGE 6 COURSE DESCRIPTION – HOSPITALITY

This Course is available as	2Unit x 2years/240 hours	
<i>The volume of learning usually includes 240 indicative hours and a minimum of 70 hours of work placement. All activities that the learner is required to be engaged in to complete this course are conducted under supervision.</i>		
<i>Our RTO is committed to providing high quality training to students. Please discuss course patterns with your school.</i>		

Board Developed Course	Category B status for Australian Tertiary Admission Rank (ATAR)
This curriculum framework includes courses which are accredited for the HSC and provides students with the opportunity to obtain nationally recognised vocational qualifications. This is known as dual accreditation.	
Course description - This course is designed for students who wish to develop knowledge and skills to commence a career and be an effective employee in the hospitality & customer service industry. Students who are assessed as competent in sufficient units of competency will be eligible for a full Certificate qualification; partial completion will lead to a Statement of Attainment. Qualification pathway information is available from the Australian Apprenticeships Training Information Service :	

Course structure: The following content will be addressed as part of this Qualification. Reduced or modified patterns of delivery may target specific units of competency. <i>Please discuss units of competency with your school.</i>			
Compulsory/Core Units – HSC Examinable			
SITHIND202	Use Hospitality skills effectively	SITHFAB206	Serve food and beverage
SITXCOM201	Show social and cultural sensitivity	SITHFAB204	Prepare and serve espresso coffee
SITXCCS202	Interact with customers	Elective Units	
BSBWOR203	Work effectively with others	SITHCCC101	Use food preparation equipment
SITXWHS101	Participate in safe work practices	SITHCCC103	Prepare sandwiches
SITHIND201	Source and use information on the hospitality industry	SITXFSA201	Participate in safe food handling practices
SITXFSA101	Use hygienic practices for food safety	BSBSUS201	Participate in environmentally sustainable work practices
SITHFAB203	Prepare and serve non-alcoholic beverages	SITHACS101	Clean premises and equipment

<p>Course contribution (to be made directly to school): Yr11 \$180 Yr12 \$120</p> <p>Course contributions are made to cover the ongoing costs of consumables and materials used as part of this course. <i>If you are unable to make contributions or are experiencing financial difficulty, please contact your school.</i></p> <p>Refunds: Students who exit the course before completion may be eligible for a partial refund of fees. The amount of the refund will be pro-rata, dependent upon the time the student has been enrolled in the course. <i>Please discuss any matters relating to refunds with your school</i></p>
--

<p>Course specific resources and equipment:</p> <p>Due to the specific nature of training and assessment in this industry area, the following specific resources and equipment are required of students undertaking this course. <i>Please discuss with your school if you are unable to, or have difficulty meeting these requirements.</i></p>	<ul style="list-style-type: none"> • Black fully enclosed work shoes • Black Polo T Shirt, Apron & Skull Cap (included in fees) • Black Dress Trousers or Skirt • White Shirt or Blouse
--	---

<p>**Qualification currently under Review and is subject to change in 2017</p> <p>Please note that the current version of this qualification is under review by the relevant National Skills Council and the NSW Board of Studies (BOSTES). The RTO will provide additional information to students regarding new qualifications completed as part of this HSC VET course as soon as possible.</p>

<p>Exclusions: VET course exclusions can be checked on the Board's website at www.boardofstudies.nsw.edu.au/voc_ed/exclusions.html.</p>
--

Assessment and course completion

Competency-based assessment

Students in this course work to develop the competencies, skills and knowledge described by each unit of competency. To be assessed as competent a student must demonstrate that they can effectively carry out tasks to industry standard. Students will be progressively assessed as 'competent' or 'not yet competent' in individual units of competency. Students may apply for Recognition of Prior Learning provided suitable evidence of competency is submitted.

Credit Transfer and Recognition of Prior Learning (RPL)

Our RTO acknowledges the experience and prior learning of our students. Students who are able to present transcripts from other Australian RTOs or who are able to present relevant experiences in work may qualify for Credit Transfer (CT) or Recognition of Prior Learning. All applications for CT or RPL should be made to the course teacher.

Mandatory Work Placement

Students undertaking this course are required to complete work placement to a minimum hours as specified below. Work placement involves the student completing real work experiences in industry settings. In some courses, in-school events may contribute to mandatory work placement hours. Where this is possible, students will be fully informed upon enrolment.

- 2 Unit x 1 year courses: 35 hours
- 2 Unit x 2 years courses: 70 hours
- 4 Units x 1 year courses 70 hours
- Some Specialisation Courses may require additional work placement

Optional HSC examination

Students completing this course are eligible to sit an optional, written HSC examination. The purpose of the examination is to provide a mark which may be used in the calculation of the ATAR. The examination is independent of the competency-based assessment undertaken during the course and has no impact on the eligibility to receive an AQF VET qualification.

Specialisation studies

Students may be offered the opportunity to undertake additional units of competency and credit towards their qualifications via Specialisation Studies. Information will be made available to students where appropriate.

N Determinations

Where a student has not met NSW Board of Studies, Teaching & Educational Standards (BOSTES) course completion criteria, (including meeting work placement requirements), they may receive an 'N' award warning (course not satisfactorily completed). Students issued with an 'N' award warning will be issued with a rectification which must be completed. Students who receive more than 2 N awards may be at risk of not completing BOSTES requirements and may not be awarded the appropriate units of credit towards their HSC. Any unit of competency achieved will be awarded as part of the VET qualification.

Appeals

Students may lodge appeals against assessment decisions or 'N' determinations through their school.

Qualification changes and updates

Due to the dynamic nature of VET, qualifications may change during the course of study. The RTO will ensure that students are fully informed of these changes and may transition students to the latest qualification during the course. The RTO will ensure that any change will be made with a minimum of disruption.

Employability skills:

There are eight Employability Skills: communication, teamwork, problem solving, initiative and enterprise, planning and organising, self-management, learning and technology. A summary of the employability skills developed through this qualification can be downloaded from <http://employabilityskills.training.com.au/>

School-based Apprenticeships and Traineeships (SBATs)

A school-based traineeship is available in this course.

To express an interest or obtain further information go to <http://www.sbatjobs.info/>

Your school SBAT Coordinator, Careers Advisor, VET Coordinator or VET Teacher is available to discuss apprenticeship and traineeships as part of your HSC.

By enrolling in a VET qualification in NSW Public Schools Tamworth RTO 90162, you are choosing to participate in a program of study that will give you the best possible direction towards a nationally recognised qualification. You will be expected to complete assessments relevant to the qualification and adhere to the requirements of the NSW Board of Studies, Teaching and Educational Standards

SIR202XX Certificate II in Retail Services (Qualification Pending)**
Statement of Attainment towards SIR202XX Certificate II in Retail Services (Qualification Pending)**

2017 STAGE 6 COURSE DESCRIPTION – RETAIL SERVICES

This Course is available as	2Unit x 2years/240 hours
<i>The volume of learning usually includes 240 indicative hours and a minimum of 70 hours of work placement. All activities that the learner is required to be engaged in to complete this course are conducted under supervision.</i>	
<i>Our RTO is committed to providing high quality training to students. Please discuss course patterns with your school.</i>	

Board Developed Course	Category B status for Australian Tertiary Admission Rank (ATAR)
This curriculum framework includes courses which are accredited for the HSC and provides students with the opportunity to obtain nationally recognised vocational qualifications. This is known as dual accreditation.	
Course description - This course is designed for students who wish to develop knowledge and skills to commence a career and be an effective employee in the retail services and customer service industry. Students who are assessed as competent in sufficient units of competency will be eligible for a full Certificate qualification; partial completion will lead to a Statement of Attainment. Qualification pathway information is available from the Australian Apprenticeships Training Information Service :	

Course structure: The following content will be addressed as part of this Qualification. Reduced or modified patterns of delivery may target specific units of competency. *Please discuss units of competency with your school.*

Compulsory/Core Units Examinable*		HSC	Note: These units reflect the SIR20212. These units may also be subject to change but a reflect a reasonable equivalence of 2017 units	
SIRXCCS201*	Apply point-of-sale handling procedures*	SIRXICT001A	Operate retail technology	
SIRXCCS202*	Interact with customers*	SIRXMER201*	Merchandise products*	
SIRXCOM101*	Communicate in the workplace to support team and customer outcomes*	SIRXSLS002*	Advise on products and services*	
SIRXIND101*	Work effectively in a customer service environment*	Elective Units		
SIRXRSK201*	Minimise loss*	SIRXFIN201	Balance and secure point-of-sale terminal	
SIRXSLS201*	Sell products and services*	SIRXINV001A	Perform stock control procedures	
SIRXWHS101*	Apply safe work practices*	SIRXMER202	Plan, create and maintain displays	
SIRXCLM101	Organise and maintain work areas	SIRXFIN002A	Perform Retail Finance Duties	

Course contribution (to be made directly to school): \$ Nil
 Course contributions are made to cover the ongoing costs of consumables and materials used as part of this course.
If you are unable to make contributions or are experiencing financial difficulty, please contact your school.

Refunds: Students who exit the course before completion may be eligible for a partial refund of fees. The amount of the refund will be pro-rata, dependent upon the time the student has been enrolled in the course.
Please discuss any matters relating to refunds with your school

Course specific resources and equipment: Due to the specific nature of training and assessment in this industry area, the following specific resources and equipment are required of students undertaking this course. <i>Please discuss with your school if you are unable to, or have difficulty meeting these requirements.</i>	<ul style="list-style-type: none"> • None
---	--

****Qualification currently under Review and is subject to change in 2017**
 Please note that the current version of this qualification is under review by the relevant National Skills Council and the NSW Board of Studies (BOSTES). The RTO will provide additional information to students regarding new qualifications completed as part of this HSC VET course as soon as possible.

Exclusions:
 VET course exclusions can be checked on the Board's website at www.boardofstudies.nsw.edu.au/voc_ed/exclusions.html.

Assessment and course completion

Competency-based assessment

Students in this course work to develop the competencies, skills and knowledge described by each unit of competency. To be assessed as competent a student must demonstrate that they can effectively carry out tasks to industry standard. Students will be progressively assessed as 'competent' or 'not yet competent' in individual units of competency. Students may apply for Recognition of Prior Learning provided suitable evidence of competency is submitted.

Credit Transfer and Recognition of Prior Learning (RPL)

Our RTO acknowledges the experience and prior learning of our students. Students who are able to present transcripts from other Australian RTOs or who are able to present relevant experiences in work may qualify for Credit Transfer (CT) or Recognition of Prior Learning. All applications for CT or RPL should be made to the course teacher.

Mandatory Work Placement

Students undertaking this course are required to complete work placement to a minimum hours as specified below. Work placement involves the student completing real work experiences in industry settings. In some courses, in-school events may contribute to mandatory work placement hours. Where this is possible, students will be fully informed upon enrolment.

- 2 Unit x 1 year courses: 35 hours
- 2 Unit x 2 years courses: 70 hours
- 4 Units x 1 year courses 70 hours
- Some Specialisation Courses may require additional work placement

Optional HSC examination

Students completing this course are eligible to sit an optional, written HSC examination. The purpose of the examination is to provide a mark which may be used in the calculation of the ATAR. The examination is independent of the competency-based assessment undertaken during the course and has no impact on the eligibility to receive an AQF VET qualification.

Specialisation studies

Students may be offered the opportunity to undertake additional units of competency and credit towards their qualifications via Specialisation Studies. Information will be made available to students where appropriate.

N Determinations

Where a student has not met NSW Board of Studies, Teaching & Educational Standards (BOSTES) course completion criteria, (including meeting work placement requirements), they may receive an 'N' award warning (course not satisfactorily completed). Students issued with an 'N' award warning will be issued with a rectification which must be completed. Students who receive more than 2 N awards may be at risk of not completing BOSTES requirements and may not be awarded the appropriate units of credit towards their HSC. Any unit of competency achieved will be awarded as part of the VET qualification.

Appeals

Students may lodge appeals against assessment decisions or 'N' determinations through their school.

Qualification changes and updates

Due to the dynamic nature of VET, qualifications may change during the course of study. The RTO will ensure that students are fully informed of these changes and may transition students to the latest qualification during the course. The RTO will ensure that any change will be made with a minimum of disruption.

Employability skills:

There are eight Employability Skills: communication, teamwork, problem solving, initiative and enterprise, planning and organising, self-management, learning and technology. A summary of the employability skills developed through this qualification can be downloaded from <http://employabilityskills.training.com.au/>

School-based Apprenticeships and Traineeships (SBATs)

A school-based traineeship is available in this course.

To express an interest or obtain further information go to <http://www.sbatjobs.info/>

Your school SBAT Coordinator, Careers Advisor, VET Coordinator or VET Teacher is available to discuss apprenticeship and traineeships as part of your HSC.

FSK20113 Certificate II in Skills for Work and Vocational Pathways (FSK release 1.1)

Statement of Attainment towards FSK20113 Certificate II in Skills for Work and Vocational Pathways (FSK release 1.1)

2017 STAGE 6 BOARD ENDORSED COURSE DESCRIPTION – SKILLS FOR WORK AND VOCATIONAL PATHWAYS

This Course is available as	2Units x 1year 120 hours	3Units x 1 year 180 hours	2Units x 2years 240 hours	4Units x 1year 240hours
<i>The volume of learning usually includes 240 indicative hours. All activities that the learner is required to be engaged in to complete this course are conducted under supervision.</i>				
<i>Our RTO is committed to providing high quality training to students. Please discuss course patterns with your school.</i>				

Board Endorsed Course	Nil status for Australian Tertiary Admission Rank (ATAR)
This Board Endorsed Course includes courses which are accredited for the HSC and provides students with the opportunity to obtain nationally recognised vocational qualifications. This is known as dual accreditation.	
Course description - This course is designed for individuals who require further foundation skills development to prepare for workforce entry or vocational training pathways. Students who are assessed as competent in sufficient units of competency will be eligible for a full Certificate qualification; partial completion will lead to a Statement of Attainment. Qualification pathway information is available from the Australian Apprenticeships Training Information Service :	

Course structure: The following content will be addressed as part of this Qualification. Reduced or modified patterns of delivery may target specific units of competency. <i>Please discuss units of competency with your school.</i>	
Compulsory/Core Units	Elective Units
FSKDIG03	FSKRDG10 Read and respond to routine workplace information FSKWTG09 Write routine workplace texts FSKLRG10 Use routine strategies for career planning FSKRDG09 Read and respond to routine standard operating procedures FSKWTG07 Write routine formal workplace texts BSBITU201 Produce simple word processed documents
FSKLRG09	
FSKLRG11	
FSKNUM14	
FSKNUM15	
FSKOCM07	
FSKRDG10	
FSKWTG09	
FSKWTG09	
Course contribution (to be made directly to school): \$20 Course contributions are made to cover the ongoing costs of consumables and materials used as part of this course. <i>If you are unable to make contributions or are experiencing financial difficulty, please contact your school.</i>	
Refunds: Students who exit the course before completion may be eligible for a partial refund of fees. The amount of the refund will be pro-rata, dependent upon the time the student has been enrolled in the course. <i>Please discuss any matters relating to refunds with your school</i>	
Course specific resources and equipment: Due to the specific nature of training and assessment in this industry area, the following specific resources and equipment are required of students undertaking this course. <i>Please discuss with your school if you are unable to, or have difficulty meeting these requirements.</i>	<ul style="list-style-type: none"> • Access to internet and computers

Exclusions:

VET course exclusions can be checked on the Board's website at www.boardofstudies.nsw.edu.au/voc_ed/exclusions.html.

Assessment and course completion**Competency-based assessment**

Students in this course work to develop the competencies, skills and knowledge described by each unit of competency. To be assessed as competent a student must demonstrate that they can effectively carry out tasks to industry standard. Students will be progressively assessed as 'competent' or 'not yet competent' in individual units of competency. Students may apply for Recognition of Prior Learning provided suitable evidence of competency is submitted.

Credit Transfer and Recognition of Prior Learning (RPL)

Our RTO acknowledges the experience and prior learning of our students. Students who are able to present transcripts from other Australian RTOs or who are able to present relevant experiences in work may qualify for Credit Transfer (CT) or Recognition of Prior Learning. All applications for CT or RPL should be made to the course teacher.

Mandatory Work Placement

Some work placement may be undertaken in this course if students are deemed ready for work placement.

Optional HSC examination

There is no HSC Examination for this course.

Specialisation studies

There are no specialisation studies associated with this course.

N Determinations

Where a student has not met NSW Board of Studies, Teaching & Educational Standards (BOSTES) course completion criteria, (including meeting work placement requirements), they may receive an 'N' award warning (course not satisfactorily completed). Students issued with an 'N' award warning will be issued with a rectification which must be completed. Students who receive more than 2 N awards may be at risk of not completing BOSTES requirements and may not be awarded the appropriate units of credit towards their HSC. Any unit of competency achieved will be awarded as part of the VET qualification.

Appeals

Students may lodge appeals against assessment decisions or 'N' determinations through their school.

Qualification changes and updates

Due to the dynamic nature of VET, qualifications may change during the course of study. The RTO will ensure that students are fully informed of these changes and may transition students to the latest qualification during the course. The RTO will ensure that any change will be made with a minimum of disruption.

Foundation Skills:

There are seven Foundation Skills: Learning, Reading, Writing, Oral communication, Navigate the world of work, Interact with others and Get the work done. The Foundation Skills for each unit of competency describes language, literacy, numeracy and employment skills incorporated in the performance criteria that are required for competent performance for each unit. More information on Foundation Skills for each individual unit of competency within this qualification can be found by locating the unit information from training.gov.au

School-based Apprenticeships and Traineeships (SBATs)

There is no SBAT pathway associated with this course.

By enrolling in a VET qualification in NSW Public Schools Tamworth RTO 90162, you are choosing to participate in a program of study that will give you the best possible direction towards a nationally recognised qualification. You will be expected to complete assessments relevant to the qualification and adhere to the requirements of the NSW Board of Studies, Teaching and Educational Standards.

SIS20513 Certificate II in Sport Coaching (SIS10 release 3.1)

Statement of Attainment towards SIS20513 Certificate II in Sport Coaching (SIS10 release 3.1)

2017 STAGE 6 COURSE DESCRIPTION – SPORT COACHING

This Course is available as	2Unit x 2years/240 hours
<i>The volume of learning usually includes 240 indicative hours and a minimum of 70 hours of work placement. All activities that the learner is required to be engaged in to complete this course are conducted under supervision.</i>	
<i>Our RTO is committed to providing high quality training to students. Please discuss course patterns with your school.</i>	

Board Endorsed Course	Nil status for Australian Tertiary Admission Rank (ATAR)
This Board Endorsed Course includes courses which are accredited for the HSC and provides students with the opportunity to obtain nationally recognised vocational qualifications. This is known as dual accreditation.	
Course description - This course is designed for students who wish to develop knowledge and skills to commence a career and be an effective employee in the sports education and coaching industries. Students who are assessed as competent in sufficient units of competency will be eligible for a full Certificate qualification; partial completion will lead to a Statement of Attainment. Qualification pathway information is available from the Australian Apprenticeships Training Information Service :	

Course structure: The following content will be addressed as part of this Qualification. Reduced or modified patterns of delivery may target specific units of competency. <i>Please discuss units of competency with your school.</i>			
Compulsory/Core Units		Possible Elective Units	
BSBWOR202A	Organise and complete daily work activities	SISSTPT201A	Implement sports injury prevention
HLTAID003	Apply first aid	SISXCAI101A	Provide equipment for activities
SISSSCO101	Develop and update knowledge of coaching practices	ICPDMT263	Access and use the Internet
SISSSCO202	Coach beginner or novice participants to develop fundamental motor skills	SISSTPT303A	Conduct basic warm-up and cool-down programs
SISSSDE201	Communicate effectively with others in a sport environment	SISSSOF101	Develop and update officiating knowledge
SISXCAI102A	Assist in preparing and conducting sport and recreation sessions	A range of specialisation units are available in in this course including Basketball, Rugby League, Netball, Athletics and a mixture of other sports. Consult your teacher to discuss which units are included in courses at your school.	
SISXIND211	Develop and update sport, fitness and recreation industry knowledge		
SISXWHS101	Follow work health and safety policies		

Course contribution (to be made directly to school): \$0 Course contributions are made to cover the ongoing costs of consumables and materials used as part of this course. <i>If you are unable to make contributions or are experiencing financial difficulty, please contact your school.</i>	
Refunds: Students who exit the course before completion may be eligible for a partial refund of fees. The amount of the refund will be pro-rata, dependent upon the time the student has been enrolled in the course. <i>Please discuss any matters relating to refunds with your school</i>	
Course specific resources and equipment: Due to the specific nature of training and assessment in this industry area, the following specific resources and equipment are required of students undertaking this course. <i>Please discuss with your school if you are unable to, or have difficulty meeting these requirements.</i>	<ul style="list-style-type: none"> Students must complete a registered 1st Aid course as a requirement of the Certificate II SIS20513

Exclusions: VET course exclusions can be checked on the Board's website at www.boardofstudies.nsw.edu.au/voc_ed/exclusions.html .

Assessment and course completion

Competency-based assessment

Students in this course work to develop the competencies, skills and knowledge described by each unit of competency. To be assessed as competent a student must demonstrate that they can effectively carry out tasks to industry standard. Students will be progressively assessed as 'competent' or 'not yet competent' in individual units of competency. Students may apply for Recognition of Prior Learning provided suitable evidence of competency is submitted.

Credit Transfer and Recognition of Prior Learning (RPL)

Our RTO acknowledges the experience and prior learning of our students. Students who are able to present transcripts from other Australian RTOs or who are able to present relevant experiences in work may qualify for Credit Transfer (CT) or Recognition of Prior Learning. All applications for CT or RPL should be made to the course teacher.

Mandatory Work Placement

Students undertaking this course are required to complete work placement to a minimum hours as specified below. Work placement involves the student completing real work experiences in industry settings. In some courses, in-school events may contribute to mandatory work placement hours. Where this is possible, students will be fully informed upon enrolment.

- 2 Unit x 2 years course: 35 hours

Optional HSC examination

There is no HSC Examination for this course.

Specialisation studies

There are no specialisation studies associated with this course.

N Determinations

Where a student has not met NSW Board of Studies, Teaching & Educational Standards (BOSTES) course completion criteria, (including meeting work placement requirements), they may receive an 'N' award warning (course not satisfactorily completed). Students issued with an 'N' award warning will be issued with a rectification which must be completed. Students who receive more than 2 N awards may be at risk of not completing BOSTES requirements and may not be awarded the appropriate units of credit towards their HSC. Any unit of competency achieved will be awarded as part of the VET qualification.

Appeals

Students may lodge appeals against assessment decisions or 'N' determinations through their school.

Qualification changes and updates

Due to the dynamic nature of VET, qualifications may change during the course of study. The RTO will ensure that students are fully informed of these changes and may transition students to the latest qualification during the course. The RTO will ensure that any change will be made with a minimum of disruption.

Employability skills:

There are eight Employability Skills: communication, teamwork, problem solving, initiative and enterprise, planning and organising, self-management, learning and technology. A summary of the employability skills developed through this qualification can be downloaded from <http://employabilityskills.training.com.au/>

School-based Apprenticeships and Traineeships (SBATs)

A school-based traineeship is available in this course.

To express an interest or obtain further information go to <http://www.sbatjobs.info/>

Your school SBAT Coordinator, Careers Advisor, VET Coordinator or VET Teacher is available to discuss apprenticeship and traineeships as part of your HSC.

By enrolling in a VET qualification in NSW Public Schools Tamworth RTO 90162, you are choosing to participate in a program of study that will give you the best possible direction towards a nationally recognised qualification. You will be expected to complete assessments relevant to the qualification and adhere to the requirements of the NSW Board of Studies, Teaching and Educational Standards.

HUNTER SPORTS HIGH SCHOOL

Year 10 Course Selections – Record of Interview

Student Name: _____ Interviewed By: _____ Date: _____

How sure are you that you will be returning to Hunter Sports High School in 2017?

Definitely I won't be returning Unsure (Please send to Careers Advisor)

Are you currently doing TSP **Yes / No** Sport _____ Are you going to continue **Yes / No**

Which senior study pathway have you chosen? **PLEASE CIRCLE STUDY PATTERN CHOSEN**

Have you already completed 2 units of SPC and PI? **Yes / No**

Pathway	Academic HSC and ATAR	Academic/Vocational HSC and ATAR	HSC no ATAR
Compulsory	English – ADV or Std Fundamentals (with Std)	English – Adv or Std Fundamentals (with Std)	English – Std or CEC Fundamentals (with Std)
Requirements (tick)	5 other BDC (if TSP only 4)	At least 3 other BDC	At least 2 other BDC
	12 units	12 units	12 units
	No more than 6 units of Science	No more than 6 units of Science	No more than 6 units of Science
	Senior Science as the only Science	Senior Science as the only Science	Senior Science as the only Science
	No more than 2 units of BEC	TSP – must choose Sports Coaching	
	Only 1 Cat B Vocational subject	No more than 2 units of BEC	See Careers Advisor to complete TVET application
	Compacted curriculum	Compacted curriculum	
		See Careers Advisor to complete the application	
Staff Signature			

Courses Chosen: Selections must be in preference order.

1	TSP	NO TSP		Reserves	
2	English			1	
3				2	
4				3	
5					
6					
7					
8	English Extension	Yes	No		
9	Maths Extension	Yes	No		

Student's Signature: _____ Date: _____ Parent's Signature: _____ Date: _____

Have more than 2 VET / TVET subjects been chosen? NO YES (Must be sighted & endorsed by EBOs Supervisor Mr Curry)

Approved Signature: _____

Not Approved Reason: _____

Administration Use Only: Date entered onto Web Choice: Student sign off sheet printed:

